

Together, we're shaping the future of childhood disability research!

Research works best when everyone has a chance to be included. Let's make discoveries together!



Learn more

Scan the QR code to visit hollandbloorview.ca/connect2research



Email us: connect2research@hollandbloorview.ca

Call us: 416-425-6220 ext. 3000

Bloorview
RESEARCH INSTITUTE

About the Bloorview Research Institute

The Bloorview Research Institute (BRI) is embedded within Holland Bloorview Kids Rehabilitation Hospital, Canada's largest pediatric rehabilitation hospital that is fully affiliated with the University of Toronto. It has ranked amongst Canada's top 40 research hospitals for more than a decade. The institute is the only university-affiliated research institute in Canada dedicated to pediatric disability and one of very few around the world.

BRI brings together teams of top researchers and trainees from a wide array of disciplines including physicians, psychologists, allied health professionals, engineers, neuroscientists, sociologists and even urban planners. Together, they work collaboratively with the community to co-design and conduct transformative, clinically relevant research focused on childhood onset disability, injury and developmental diversity.

Holland Bloorview Kids Rehabilitation Hospital

150 Kilgour Road, Toronto, ON M4G 1R8
T: 416-425-6220 Toll-Free: 800-363-2440
F: 416-425-6591 E: info@hollandbloorview.ca

hollandbloorview.ca



connect2research

Connecting families with research at Holland Bloorview

Research starts with you!

Holland Bloorview
Kids Rehabilitation Hospital

[2027.25]

What is connect2research?

Research at Holland Bloorview helps improve care, treatments, and technologies for children and youth.

connect2research is a secure database that helps connect families with research opportunities that may be a good fit for them.

Key Facts:

- Research helps drive innovation in childhood disability care.
- All Holland Bloorview clients are automatically included unless they opt out.
- Participation is **always voluntary**—you choose what's right for you.



How does it work?

- 1 You're automatically included** – If you've received services at Holland Bloorview since May 1, 2011, you're in the database.
- 2 Researchers request eligible participants** – If a study matches your profile, your contact info is shared with the research team (only after ethics approval).
- 3 You get invited** – A researcher may contact you via email, phone, or mail with details about a study.
- 4 You decide** – Participation is always up to you!

Want to opt out? You can remove yourself at any time—just email or call us.

Your privacy matters

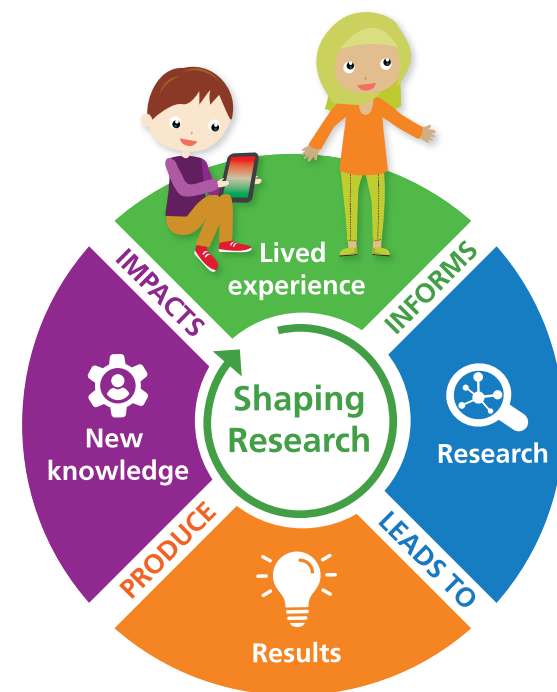
We take privacy seriously! **connect2research** follows strict security and privacy policies.



Only **limited info** is shared (age, diagnosis, and contact details).

Your full medical record stays private—only authorized care teams can access it.

You can **opt out anytime** without affecting your care at Holland Bloorview.



Why participate?

Your voice matters!

By joining a study, you help:

- Shape better treatments and therapies.
- Improve healthcare technology.
- Make research more inclusive for all kids and families.

Real Impact: Many past studies at Holland Bloorview have led to life-changing improvements in rehabilitation, assistive technology, and social inclusion!