



Holland Bloorview
Kids Rehabilitation Hospital

Environmental Sustainability Impact Report

September 2025

Land acknowledgement

We acknowledge the sacred land on which Holland Bloorview is situated. This land, Mother Earth, our Earth Mother, is the territory of the Huron-Wendat First Nation, the Seneca as part of the Haudenosaunee Confederacy, the Mississaugas of the Credit River and the Mississauga of Scugog Island First Nation. The City of Toronto is covered by Treaty 13.

We recognize Indigenous land title as set out in the Royal Proclamation of 1763, which envisioned self-determination and self-government. We understand The Truth and Reconciliation Report and calls to action that recommend all levels of government implement Indigenous rights in the original spirit of the treaties. Indigenous peoples, and allies for reconciliation, view the treaties as a sacred obligation that commits both parties to maintain a respectful relationship, sharing the lands and resources equitably. We are committed to a path of truth and reconciliation, which is based on partnership and respect for the many ways of learning, knowing and being.

Today, Toronto is still the home to many Indigenous peoples from across Turtle Island. We are grateful, honoured and humbled to have the opportunity to, in partnership with clients and families, provide care and services for children, youth and families with disabilities and developmental differences in this city and this territory we call Turtle Island.

Chi-Miigwetch - Nia:weh - Merci - Thank you.



Dear Holland Bloorview community,

At Holland Bloorview, our vision is the most meaningful and healthy futures for all children, youth and families. We enable this by providing exceptional care and services, conducting impactful research, all while teaching the next generation of pediatric providers. Underpinning this critical work is a commitment to lead with a lens on environmental sustainability.

Over the past year, our inaugural Environmental Sustainability Task Force (ESTF) has advanced a number of initiatives that are helping us embed sustainability into the fabric of our hospital. From rethinking how we manage waste and use energy, to deepening staff engagement and building a culture of environmental awareness, our efforts are driving real change.

Environmental sustainability is not an add-on to our work – it's integral to how we care, how we operate and how we plan for the future. Together we are elevating Holland Bloorview's accountability to planetary health.

This first-ever report summarizes the beginning of our journey covering activities that took place in 2024-25. Thank you to every member of the task force and to all our champions across the hospital community for helping us shape a healthier, more sustainable world.

With gratitude,

A handwritten signature in black ink, appearing to read 'Stewart Wong', with a stylized flourish at the end.

Stewart Wong
Vice president, communications, strategy and sustainability

Executive summary

In April 2024, Holland Bloorview launched its first **Environmental Sustainability Task Force (ESTF)**, a cross-functional group of staff and family leader volunteers committed to integrating sustainability into every corner of hospital life.

Over the past year, the ESTF has laid the foundation for hospital-wide change. Initiatives like **Earth Week 2025 events** and **facility-wide energy use reductions** mark a shift from one-off green actions to a culture of environmental responsibility. These efforts are grounded in our values and aligned with our [Holland Bloorview 2030: Transformative Care, Inclusive World](#) strategic plan.

We are witnessing growing participation in **awareness and education events** as well as **feedback surveys**. We are building not just greener infrastructure, but a greener mindset, one that puts care for people and planet side by side.

In addition, we instituted a new **environmental sustainability policy**, installed **environmentally friendly infrastructure** (LED lighting, waterless urinals, motion-activated paper towel dispensers, a new water filling station and re-usable cafeteria plates) and published **clear targets for energy reduction in our [Energy Conservation & Demand Management Plan](#)**.

Together, these actions move us toward a future where environmental sustainability is embedded in how we deliver care, how we collaborate and how we lead.

Earth Week 2025

14 kg

of waste
collected during
campus clean-up



100+

succulent plants
distributed



150+

engaged in Earth Week
initiatives including our
first-ever recycling and
composting seminar





Our vision for sustainability

At Holland Bloorview, we strive to integrate a lens of environmental sustainability in all that we do. We believe that caring for the environment is part of caring for children and families.

As Canada's largest pediatric rehabilitation hospital, our commitment goes beyond care delivery. Our innovative mindset enables the building of systems and spaces rooted in inclusion, diversity, equity, accessibility and anti-racism. Our goal is to make environmental sustainability practical, impactful and embedded in daily hospital life. We want to be a leader and role model for hospitals across Ontario.

“

Having children has made me more thoughtful towards the environment as I know it's the next generation that will pay the price if my generation doesn't change our way of thinking.”

– Michael Craven, director of facilities, co-chair, Environmental Sustainability Task Force



Meet the task force



Sreyas Adusumilli
Registered pharmacy
technician
he | his | him



Allana Martins
Facilities management
coordinator
she | her | hers



Haneen Al-khasawneh
Strategy implementation
lead
she | her | hers



Angela Renkema
Nursing vision and
strategy lead
she | her | hers



Corey Beckford
Manager, facilities
he | his | him



Rajpreet Singh Sandhu
Manager, environmental
services
he | his | him



Wei Chien
Clinical pharmacist
she | her | hers



Stewart Wong
VP communications,
strategy and sustainability
he | his | him



Michael Craven
Director, facilities
management
he | his | him



Kara Sharp
Family leader
she | her | hers



Harshi Dama
Safety specialist
she | her | hers



Lana Oikawa
Family leader
she | her | hers



Jamie Marshall
Executive assistant &
department coordinator
she | her | hers



**Katherine Verhagen
Rodis**
Senior officer, Holland
Bloorview Foundation
she | her | hers



Task force objectives: what guides our work

The Environmental Sustainability Task Force (ESTF) was established to integrate sustainability into the core of hospital operations and culture. Committee objectives reflect a commitment to systemic change, measurable progress and environmental accountability.

- **Assess current environmental impact** and identify opportunities for improvement across departments.
- **Develop policies and guidelines** that embed sustainability principles into day-to-day operations and long-term planning.
- **Implement initiatives** that reduce energy use, minimize waste and lower carbon emissions.
- **Advance sustainable procurement practices** to reduce environmental impact throughout our supply chain.
- **Educate and engage staff, clients, families and partners** to foster a culture of environmental stewardship.
- **Monitor and evaluate progress** toward established sustainability goals and report regularly to leadership and stakeholders.



**Transformative Care,
Inclusive World:
Holland Bloorview 2030**

2024-2025 Initiatives

Operational impact: greener infrastructure, smarter practices

Small shifts in how we operate can lead to significant environmental benefits. From lighting retrofits to supply-use reduction, 2024-2025 marked a series of thoughtful improvements that are reshaping our hospital system for the better.

Reducing waste at the source

Piloting reduced glove use on inpatient units

The reduction of disposable textiles like gloves is an important opportunity in the greening of health care. With this in mind, Holland Bloorview participated in a three-month initiative to reduce unnecessary glove use on our inpatient units. This project was conducted in collaboration with two partner hospitals in the Toronto Academic Health Science Network (TAHSN), Michael Garron Hospital and Scarborough Health Network.



Is there a risk?

Gloves ON for:



Contacting
Bodily fluids | Broken skin
Mucous membranes



Additional Precautions



Chemical Hazards
Hazardous Disinfectants
Cytotoxic Drugs



Sterile Procedures

Gloves OFF for:



Medications
Administering without precautions



Taking Vitals



Assisting with ADLS



Injections
Subcutaneous | Intramuscular
Intradermal

Holland Bloorview
Kids Rehabilitation Hospital

Remember the Four Moments
of Hand Hygiene

For more information, email us at
#Infection Prevention and Control

New signage was posted to support staff in reducing unnecessary glove use.

8 Environmental Sustainability Impact Report – September 2025

The initiative launched in July 2024 with a four-week glove-use education campaign, followed by a two-month pilot with reminder signage and check-in meetings. Results were monitored for the following three months.

Importantly, glove use is necessary in certain situations like when multiple clients develop a respiratory illness. This was the case in understanding our mixed results: glove use initially dipped and then increased due to medical necessity. The overall results over the tracking period were essentially flat. Despite this result, staff were able to engage in a meaningful environmental sustainability initiative and lessons learned can be applied to future initiatives across TAHSN.

Touchless paper towel dispensers

Environmentally conscious, motion-activated paper towel dispensers were installed throughout the hospital to minimize waste and keep our restrooms cleaner. We expect to reduce paper towel usage by 20-30 per cent through this initiative. The old paper towel dispensers will be sold for recycling to a scrap metal company with funds being returned to Holland Bloorview operations.



Reusable cafeteria plates

To cut waste, Holland Bloorview's cafeteria now offers reusable plates for pizza, the daily menu feature and other made-to-order items. Every meal eaten can be made more environmentally friendly through this addition.



Water bottle filling stations

A new water bottle filling station was added to our busy ground level floor, enabling 24/7 access to fresh, clean water. The station is fully accessible and sensor-activated for maximum convenience. The addition of another station supports a shift away from single-use plastic bottles that can take an estimated 450 years to degrade. Holland Bloorview now has eight reusable water stations.



Upgrade to waterless urinals

Waterless urinals have replaced their flushing counterparts throughout the hospital. These are designed to minimize water usage by using advanced technology that prevents odor and ensures hygiene.

We estimate that Holland Bloorview **will save**

14,000 L
of water and

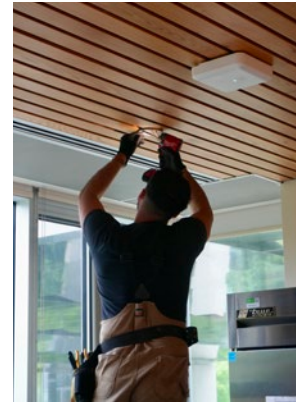
14 kg
of carbon annually



Smarter energy use

LED lighting upgrade

A full lighting retrofit throughout the hospital is improving energy efficiency and enhanced light quality across clinical and administrative areas. Approximately 5,400 fixtures will be replaced and the hospital lighting energy load will be reduced by an estimated 50 per cent. This will reduce our organizational electricity bill and carbon footprint. Old fixtures have been sold for scrap metal with the revenue reinvested into facility operations.



Weekend heating and lighting reductions

Energy use in low-occupancy areas was scaled back on weekends, an operational change that saves power without affecting comfort or care.

Did you know that Holland Bloorview ...?



Recycles its e-waste including servers, laptops and desktop computers. We work with a third party who adheres to an international standard for electronics recycling. In 2024, our recycling efforts diverted **1628 kgs of e-waste** from landfill.



Uses a 114,000-litre cistern to capture and store rainwater. We use it to water our green spaces, including our beautiful Spiral Garden.



Has a 52kW solar panel installation on our roof. This system generates power that we return to the grid and receive financial rebates in return. Last year, we received **\$34,375**

Culture in action: engaging hearts and minds

At Holland Bloorview, sustainability is more than a plan, it's becoming part of our shared culture. Through awareness campaigns, staff-driven activities and education, we are nurturing an environmental mindset across our hospital community.

Earth Week 2025: community in motion

Held from April 21–25, Earth Week 2025 brought staff, students and volunteers together for a week of hands-on environmental action and education:

- **Community clean-up:** Staff collected 14 kg of waste from the hospital grounds, Spiral Garden and nearby ravines.
- **Recycling workshop:** A guided session on waste sorting and composting, led by a member of our environmental services team.
- **Sustainability pledge wall:** Dozens of participants committed to small but meaningful environmental actions.
- **Interactive engagements:** Activities included a scavenger hunt and an Earth Day quiz, all with eco-themed prizes.
- **Succulent giveaway:** Over 100 succulents were distributed as green takeaways to reinforce sustainable habits.

The week created new touchpoints for learning and sparked conversations that will shape future programming. Over 150 people joined in this year's festivities.



What you told us: 2025 sustainability survey



In January, a hospital-wide survey provided vital insight into staff, volunteer, client and family environmental interests:

- **89%** of respondents ranked sustainability as **“very important”**
- **77%** expressed interest in **education on sustainable practices at work**
- **69%** were unaware of existing hospital sustainability initiatives

Staff called for:

- Improved recycling programs
- Reduced food waste
- Reduced energy use
- Increased renewable energy use

These results are already shaping future education, policy and future initiatives.

Staff lunch-and-learn

[Dr. Fiona Miller](#), a leading voice in the intersection of health policy and environmental sustainability, led a staff lunch-and-learn session, focusing on how we can build a more sustainable and climate-resilient health-care system. Dr. Miller is a professor of health policy at the University of Toronto and serves as director of the Collaborative Centre for Climate, Health & Sustainable Care and the CASCADES project, which is dedicated to advancing sustainability in health care.



Dr. Fiona Miller, a leader in sustainable health care, led an educational session at Holland Bloorview.

Environmental sustainability policy

In April 2025, a hospital-wide policy was created and approved by the executive leadership team. The policy provides overall direction for Holland Bloorview to *“integrate sustainable practices across all levels of our organization, ensuring that sustainability efforts are measurable, actionable and aligned with our core values.”* It also provides clarity on the role of staff, the ESTF and the executive and facility management teams. Guidance is provided to key areas on action planning including waste reduction, purchasing and environmentally sustainable clinical care.

Measuring our progress: data-driven sustainability

Tracking impact is key to driving real change. At Holland Bloorview, we're using a combination of internal targets, sector benchmarking and cultural feedback to measure where we are and where we're going.

Energy Conservation & Demand Management (ECDM) Plan

In 2024, Holland Bloorview submitted its updated **Energy Conservation & Demand Management (ECDM) Plan**, as mandated by Ontario Regulation 25/23. This five-year roadmap outlines our targets for reducing environmental impact through energy optimization and emissions reductions.

ECDM Targets (2024–2029) include:

☐ **20% reduction**
in electricity
consumption



☐ **8% reduction**
in natural gas
consumption



☐ **14% reduction**
in greenhouse
gas emissions



These targets are already being supported through changes like the **LED lighting retrofit** and **reduced heating and lighting on weekends**. Data will be tracked and reported annually.

Benchmarking against University of Toronto-affiliated hospitals

The Toronto Academic Health Science Network (TAHSN) released its first [Climate & Sustainability Report](#) (PDF) that highlights the efforts of 13 academic hospitals affiliated with the University of Toronto to prioritize sustainability and climate action.

Organizations were scored on a green (achieved), yellow (partially achieved) and red (not achieved) scale. The scorecard allows participating hospitals to:

- Compare best practices in hospital sustainability
- Identify improvement opportunities aligned with system-wide goals

This shared accountability model keeps us connected to the larger health-care sustainability movement in Ontario. Holland Bloorview scored three green, four yellow and one red. Standout areas were in organizational capacity and procurement and preparation for climate shocks. Its sole red flag was in area of waste management that has since been remedied through a new waste diversion that is being implemented in the summer and fall of 2025.

Final thoughts and looking ahead

This report marks an important beginning. In just over a year, we have seen how small decisions like switching to LED lighting or engaging the community to clean up our campus can generate meaningful change. We have laid the foundation for long-term impact and nurturing a culture of environmental responsibility.

As Holland Bloorview continues its journey to 2030, we are committed to advancing high-impact activities. In the coming year, this includes looking at increasing landfill diversion and reducing food waste.

We invite the entire Holland Bloorview community to be part of this movement. A healthier, more sustainable world begins with everyday choices made by each of us.



Environmental sustainability isn't just a checkbox; it's a necessity. As a member of the broader health-care system, we must do our part to apply a lens of sustainability in all that we do. The health of our planet depends on all of us to do our part."

— Stewart Wong, vice president, communications, strategy and sustainability



Members of Holland Bloorview's environmental sustainability task force

About Holland Bloorview

At Holland Bloorview we believe in creating a world where all youth and children belong. We are the only children's rehabilitation hospital in Canada focused on combining world-class care, transformational research, and academic leadership in the field of child and youth rehabilitation and disability. We help over 9,500 kids and youth with disabilities and complex medical needs access care that focuses on their physical, mental, and emotional well-being, and we power their infinite potential and possibility.

Together we dream big. Together we champion a world of possibility.

Holland Bloorview
Kids Rehabilitation Hospital

Holland Bloorview Kids Rehabilitation Hospital
150 Kilgour Road, Toronto, ON M4G 1R8
T: 416-425-6220 Toll-Free: 800-363-2440
F: 416-425-6591 E: info@hollandbloorview.ca
[HollandBloorview.ca](https://www.hollandbloorview.ca)

This PDF version of the environmental sustainability impact report is accessible for screen readers and other accessible technologies.