

QUICK GUIDE



ROBOT BIRLST

Holland Bloerlew
Kids Rehabilitation Hospital

MINI-GAME INSTRUCTIONS



Lean from side to side to jump on platforms



Hold up a coloured block up above your shoulder to fire a bubble matching that colour



Move your arm up and down to fly and control the jetpack



Move your hands far apart and clap your hands together to fire a paintball



Hold up a colour block to change some tiles to that colour



Move your arms around to pop the flying paint balls



Turn the steering wheel to go left and right



Hold the baton vertically in front of you and rotate your wrist to move the platform



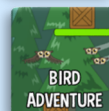
Move your arms around and hold your position to grab onto a gray grip



Move your arm out to the side to move the Wizard's wand



Use the coloured blocks to build a tower that matches the pattern Magician Bootle makes



Flap your arms like a bird to make Owl Bootle fly & lean your body to steer the direction of flight

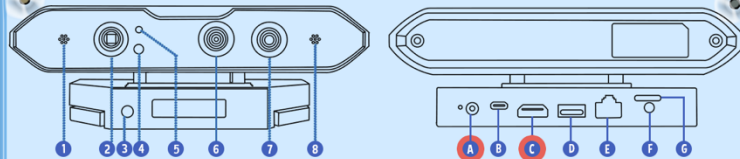
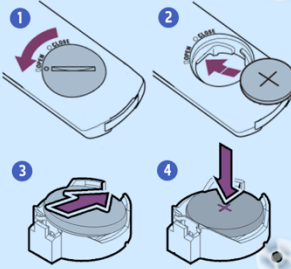


Play different musical instruments to perform activities in the game

HARDWARE SET-UP

Inserting battery into remote:

1. Twist the battery cap counter-clockwise to open
2. Locate your CR2032 coin cell battery (if present, remove clear plastic wrapping from battery)
3. Insert one edge first, with the battery oriented diagonally, then press the battery down into the rest of the battery slot
4. The battery should be inserted "+" side up (facing you)
5. Twist the battery cap clockwise to close



FRONT	1	2	3	4	5	6	7	8
	1	2	3	4	5	6	7	8
	Microphone (stereo), built in	Infrared receiving port (for remote control)	Laser projector	Proximity sensor	Proximity sensor	RGB camera	Depth camera	Microphone (stereo), built in

BACK	A	B	C	D	E	F
	A	B	C	D	E	F
	DCIN	MICRO USB	HDMI	USB	LAN	AUDIO
						MICRO SD Card

Game Set-Up

1. Connect the HDMI cable to the HDMI socket (C) on the Persee and on the TV
2. Connect the power cable to the DCIN socket (A) on the Persee and an electrical outlet
 - o If the power cable doesn't reach an outlet, use an extension cord
3. Place the Persee either on top of or in front of your TV
4. Angle the camera to provide an optimal view of your play space
 - o Minimize bright lights in the background as it may interfere with the camera's ability to track movement
5. After placing the Persee in the proper position, move to an optimized tracking area 1 - 4 metres from the unit



Refer to the image on the left as reference for what your body should look like on the camera screen

6. Turn on your TV and adjust the TV settings to the corresponding HDMI input.
7. If the Persee doesn't power on automatically, press the power button on the Persee remote
8. A screen will automatically display informing you to set the correct date and time in the system. The best way to do this is to enter in your Wi-Fi network details. We encourage that you set your date, time and Wi-Fi connection correctly as it allows the system to log your playtime accurately & without interruption!
 - o If you don't have a reliable Wi-Fi connection, you can establish an Ethernet connection by connecting to the LAN port (E) on the Persee

FIRST TIME SET-UP



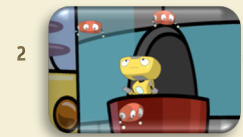
Botley is a robot that lives in Sky Spark City. One day, Botley creates his first invention on the Maker Max 3000, a Bootle! In an attempt to create a few more, Botley accidentally makes thousands!



Botley has asked you to help him track down all of the Bootles that have overrun Sky Spark City. Look inside each of the 5 headquarters to find different mini games you can play. By playing these games, you'll help Botley collect those pesky Bootles and discover some surprises along the way!



1 Raise your hand to get started



2 Meet Botley and raise your hand to help him catch Bootles



3 Raise your hand to help feed Growl. The selected fruit moves on its own!



4 Customize a Helper Bot



5 Use the remote to pick which movements you can do



6 Raise your hand to pick how long you'd like to play each day



7 Help Botley to wash the window using your hands. Remember to use one hand at a time!



8 Sky Spark City is where you'll play all the mini games. Play Jetpack Bootle in the Inventor HQ!

PLAYING BOOTLE BLAST



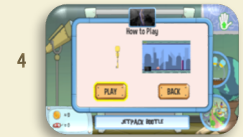
1 Raise your hand to get started



2 Raise your hand to pick a highlighted headquarter



3 Raise your hand to pick a highlighted minigame



4 Play the mini game



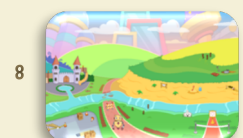
5 Finished the game? Collect some Bootles!



6 Daily mission complete? Collect some coins!



7 Visit the Maker Max 3000 in the Inventor HQ to spend your coins



8 Press any arrow key on the remote to navigate The Park!