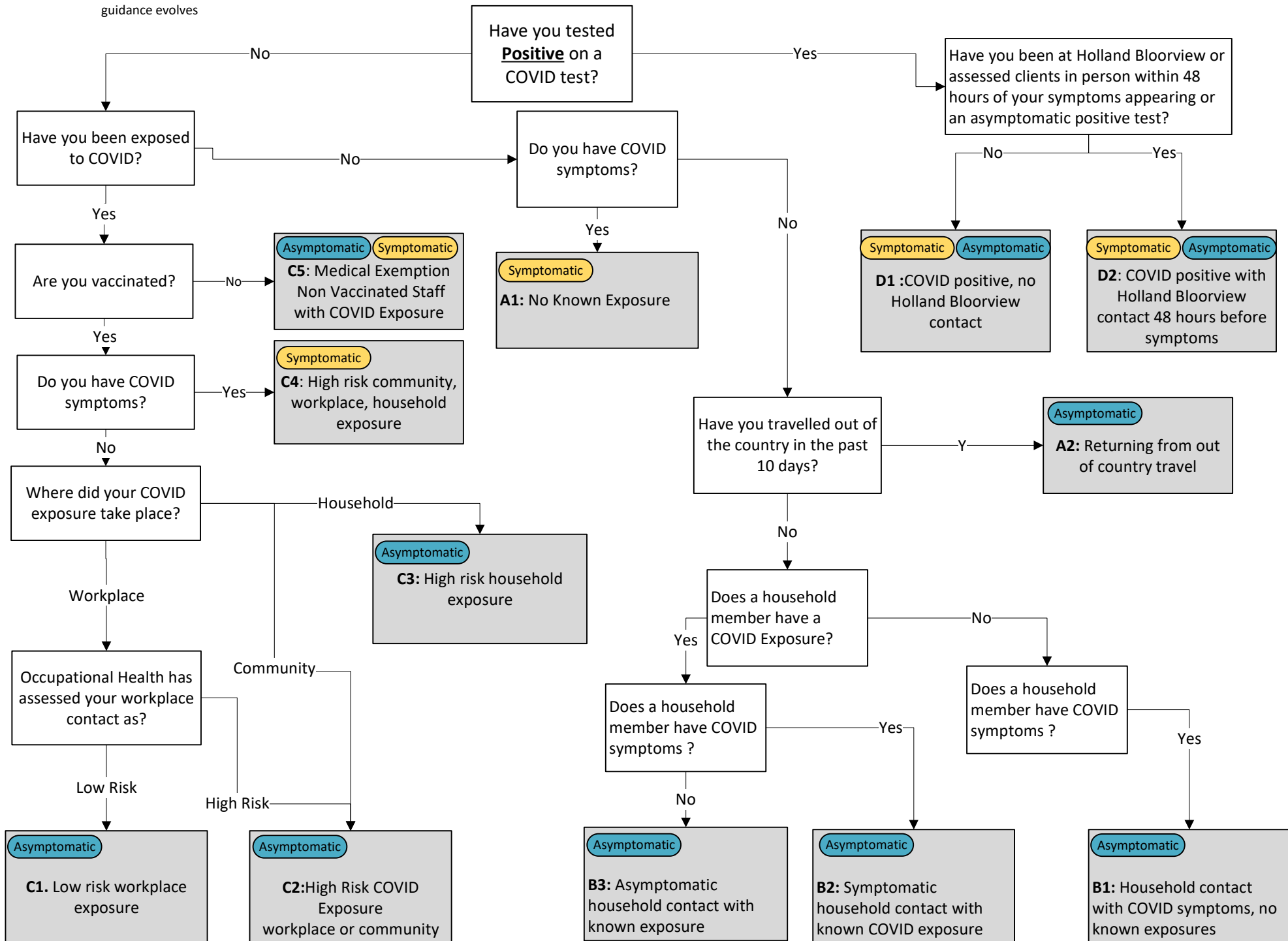


Covid-19 Exposure Workflow

Note, this document will be regularly updated as guidance evolves

Instructions: If you have a covid symptom, have travelled or have been exposed to covid, follow the workflow until you get to a grey box. See the next page for additional guidance and detail on when you can return to **on-site** work.



Holland Bloorview COVID Return to Onsite Work Flow – Jan 18 2022

	A. No known COVID Exposure		B. Not Confirmed COVID Exposure			C. COVID Exposure					D. COVID Positive (Rapid Assessment Test, Molecular Test or PCR)	
	A-1 Symptomatic	A-2 Asymptomatic	B-1 Asymptomatic	B-2 Asymptomatic	B-3 Asymptomatic	C-1 Asymptomatic	C-2 Asymptomatic	C-3 Asymptomatic	C-4 Symptomatic	C-5 Asymptomatic Symptomatic	D-1 Asymptomatic Symptomatic	D-2 Asymptomatic Symptomatic
	Staff with COVID Symptoms, No Known Exposure	Asymptomatic staff Returning from out of country travel	Household contact with COVID symptoms, no known exposures (ex. child with cough)	Symptomatic household contact with known COVID exposure	Asymptomatic household contact with known exposure	Low risk workplace exposure (as assessed by IPAC/Occ health)	High risk workplace or community exposure (unprotected exposure)	High Risk COVID Exposure (Household member has COVID)	High risk community, workplace, household exposure	Not vaccinated (medical exemption) exposure	COVID positive, no Holland Bloorview contact	COVID positive with Holland Bloorview contact 48 hours before symptoms
What to do:	Staff Response 1. Do not come to work 2. Begin self isolate 3. Book a PCR test with testing center 4. Notify the away line. 5. Notify manager PCR Testing	Staff Response 1. Book a PCR upon return including airport selection. 2. Notify Away line 3. Notify manager. 4. Symptomatic or positive test results should stay home PCR Testing	Staff Response 1. Stay home 2. Notify Away line. 3. Notify Manager Household PCR Testing	Staff Response 1. Stay home 2. Notify Away line. 3. Notify Manager Household PCR Testing	Staff Response 1. Self-monitor for symptoms 2. Monitor for symptoms in household member 3. Can continue to work if everyone remains asymptomatic 4. Limit contact with exposed individual, following IPAC/Public health protocols	Staff Response 1. Self monitor for symptoms and continue to work as long as you remain asymptomatic 2. Staff can continue to work while pending asymptomatic PCR tests	Staff Response 1. Begin self isolation 2. Notify Away line 3. Notify your manager 4. Book a PCR test immediately. (even if they are asymptomatic) PCR Testing	Staff Response 1. Begin self isolate 2. Book a PCR test at testing center 3. Notify Away line 4. Notify your manager PCR Testing	Staff Response 1. Self-isolate for 10 days from date of last contact with the positive person 2. Notify the away line. 3. Book a PCR test immediately. (even if they are asymptomatic)	Staff Response 1. Start self isolate at home. Away from other household members and continue to self monitor 2. Notify the away line. 3. Notify your manager 4. Occupational Health will clear you for returning back to work	Staff Response 1. Start self isolate at home. Away from other household members and continue to self monitor 2. Notify the away line. 3. Notify your manager 4. Prepare list of contacts you had in the hospital including staff, clients for contact tracing	
	Support:	Occupational Health 1. Review results and assess situation for return to work 2. If you receive a positive test result refer to COVID positive decision point for further direction	Occupational Health 1. Follow-up with staff to provide guidance on return to work post-travel 2. Support return to work options	Occupational Health 1. Occupational Health to advise employee to have household member tested 2. Employee to stay home until household member's PCR test returns 3. If positive, staff to follow C3/C4 decision tree 4. If negative, staff can return to work immediately if asymptomatic	Occupational Health 1. Occupational Health to advise employee to have household member tested 2. Employee to stay home until household member's PCR test returns 3. If positive, staff to follow C3/C4 decision tree 4. If negative, staff can return to work immediately if asymptomatic	Occupational Health 1. No follow up needed	Occupational Health 1. Contact trace and review staff exposure to deem it low risk	Occupational Health 1. Connect with the staff to determine isolation period required (How many days) 2. Assess if staff qualifies for Test and Work* 3. Update manager if they qualify	Occupational Health 1. Connect with the staff to determine isolation period required (ongoing exposure) 2. Assess if staff qualifies for Test and Work* 3. Update manager if they qualify 4. Support to return to work	Occupational Health 1. Provide Isolation guidance for staff 2. Notify manager of staff isolation period	Occupational Health 1. Provide Isolation guidance for staff 2. Notify manager of staff isolation period	Occupational Health 1. Provide Isolation guidance for staff and assess isolation period 2. Notify manager of staff isolation period 3. Support to return to work
Return to work Options	Test and Work Not Available	Test and Work may be an Option	Test and Work Not Applicable	Test and Work Not Applicable	Test and Work Not Applicable	Test and Work may be an Option	Test and Work may be an Option	Test and Work may be an Option	Test and Work Not Available	Test and Work Not Available	Test and Work Not Available	Test and Work Not Available
Earliest Potential Return to Work	*Test and Work occurs when asymptomatic staff with high risk exposures are brought back to work during their 10 day isolation period with additional protocols including testing and health and safety precautions. Testing includes daily rapid antigen tests and periodic PCR testing. Note: all decisions to use Test and Work are reviewed by occupational health and determined by management. It is only to be used in critical resourcing situations.											
	<ul style="list-style-type: none"> If negative test 24 to 48 hours after symptoms improvement 	<ul style="list-style-type: none"> Test at work possible with negative arrival PCR test + daily RAT and day 8 PCR until day 10 post travel 	<ul style="list-style-type: none"> Await results of household member's test prior to determining return to work eligibility 	<ul style="list-style-type: none"> Await results of household member's test prior to determining return to work eligibility 	<ul style="list-style-type: none"> Immediate return to work 	<ul style="list-style-type: none"> Immediate return to work 	<ul style="list-style-type: none"> 10 Days from last exposure Sooner if on Test at Work 	<ul style="list-style-type: none"> Due to ongoing exposure prediction not possible; assessed by occupational health 	<ul style="list-style-type: none"> At least 10 days from exposure and symptom free (24 to 48 hours) 	<ul style="list-style-type: none"> 10 Days from last exposure and symptom free (24-48 hours) 	<ul style="list-style-type: none"> Minimum 10 Days from positive test and 24 to 48 hours after symptom free 	<ul style="list-style-type: none"> Minimum 10 Days from positive test and 24 to 48 hours after symptom free