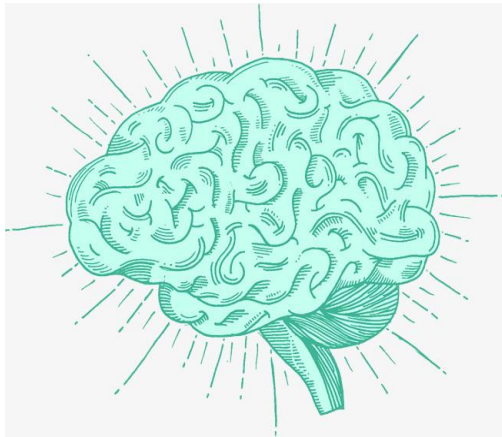


# Participate in Research

Exploring the Adaptability of the Teach-ABI eLearning Module in High School Educators



**Principal Investigator:  
Shannon Scratch,  
PhD**



## CONTACT INFORMATION:

## TO ASK QUESTIONS OR TO SIGN UP, CONTACT

Hiba Al Hakeem at [halhakeem@hollandbloorview.ca](mailto:halhakeem@hollandbloorview.ca)

Date Posted: Nov 30, 2020  
Version Date: Aug 10, 2020

REB:0188

## Do you work within a high school setting? We would love your feedback on an eLearning module.

Consider participating in our research study to evaluate a user-driven Acquired Brain Injury (ABI) eLearning intervention (**Teach-ABI**) for educators.

### What is this study about?

- *Teach-ABI* is an e-Learning online module created for educators to support students with ABI. The objective is to raise Ontario educators' awareness and knowledge of ABI and promote positive outcomes for children with ABI in the education system.

### Who can participate?

- Participants must be registered high school educators with the Ontario College of Teachers, educator trainees in accredited programs eligible to teach at the intermediate (grades 7-10) and senior (grades 11-12) levels, and/or educational assistants working in a high school setting.

### What's involved?

- Participants will attend an online session for two hours using the video conferencing platform *Zoom*.
- During this session, participants will be asked to fill a demographic form and complete an e-learning module.
- Participants will also be asked to complete an exit interview so the research team can better understand their experience with the module.

### Potential Benefits?

- Your feedback will help in designing an improved e-Learning module for high school educators.

### Potential Risks?

- Some participants may feel uncomfortable or worried giving their feedback.

Participants will receive a small token of appreciation to thank them for their time.