

Guidelines for Personnel BRI Recovery | Phase 2

Updated: Nov. 6, 2020

Overview:

These guidelines are intended for personnel staff during Phase 2 of BRI's ramp-up process.

As we carefully open our research institute up, we know that we need to plan for the possibility of ramping down if we see a second wave of community spread. We must also be mindful of personal protective equipment (PPE) inventory levels, screening, masking and physical distancing measures.

Table of Contents

<i>Restart Phases of Research Activities:</i>	1
<i>Guiding Principles:</i>	1
<i>General Guidelines:</i>	2
<i>Shift Pick-Up:</i>	2
<i>Clocking-in and Clocking-out:</i>	3
<i>Dropping/Releasing Shifts:</i>	3
<i>Cleaning of Workstations and Equipment:</i>	3
<i>Daily Electronic Attestations:</i>	3
<i>Participants and Visitors:</i>	3
<i>PPE and Cleaning Supplies:</i>	4
<i>Desk Assignments:</i>	5
<i>Meetings and Gatherings:</i>	5
<i>Work Chat Feature:</i>	5
<i>Appendix A – Pre-Screening Requirements and Logic Diagrams</i>	7
<i>Appendix B – Family Caregiver Exception Process:</i>	9
<i>Appendix C - Client Covid Response Flow Chart</i>	10

Restart Phases of Research Activities:

- Phase 1 – Activate research that does not occur in inpatient or clinical areas. Phase 1 will include regulated clinical trials, COVID-19 related research and urgent research requiring on-site equipment.
- Phase 2a – Projects that require on-site equipment and/or in-person contact with participants (cannot be virtualized) & were in the middle of data collection
- Phase 2b – Same as a) except data collection not started
- Phase 3 – Research being conducted virtually returns on-site.

Guiding Principles:

1. Adherence to government & institutional directives.
2. Safety and protection of staff, trainees, clients & families.

3. Restarting research should not hinder or impede hospital’s ability to mitigate and handle a surge and provide care.
4. Research originally permitted on-site i.e. regulated clinical trials and COVID-19 research, shall continue to resume on-site activities.
5. Research already approved for full virtual conduct shall continue to remain virtual.
6. Research requiring essential equipment accessible exclusively on-site can resume, provided no other principles are violated.
7. Research that cannot be conducted without physical distancing can resume if the appropriate infection control precautions can be implemented (e.g. PPE).
8. On-site access will be prioritized for graduate students/post-docs who are slated to complete degree requirements in the 2019-2020 academic year.
9. New recruitment for studies fulfilling these principles may commence at the discretion of the PI.
10. All research personnel, participants, vendors and visitors shall comply with the hospital’s mandate for pre-screening, entry screening, physical distancing, masking and other relevant requirements.
11. No greater than the established percentage cap of the workforce shall be on-site at any given time during Phase 2. BRI reserves the right to monitor, audit and the ability to pause any research activities again.
12. Restart plan should ensure equity across research groups.

Scheduled Timelines:

Week	Capacity	Shift Model	Participants Per Day*
Week 1: Jul 27 to Aug 2	25% - Prepare Phase	Per Day	11
Week 2: Aug 3 to Aug 16	50%	Per Day	35
Week 3: Aug 17 onwards	70% (if required)	Split into AM/PM	35

*Shared capacity across BRI

General Guidelines:

- When I Work (WIW) is a scheduling system to ensure we do not exceed the capacity thresholds set by the hospital, while allowing the flexibility for individual leaders to schedule their teams based on their needs.
- Personnel only required to be on-site are added to WIW, as we ramp up the recovery phases more staff will be added.
- Personnel continuing to work from home or remotely do not need to be added until such time when they are permitted to return on-site.
- **It is strongly encouraged you download the WIW app on to your mobile devices for optimal use.**

Detailed instructions for using WIW as an employee or trainee

<https://help.wheniwork.com/articles/employee-training-resources/>

Shift Pick-Up:

- Shifts may be self-serve or assigned to you based on the preference of your leader:
 1. Shifts in Open Shifts can be selected as “self-serve”.
 2. Shifts may be assigned to you directly by your manager.
 - Personnel will be asked to confirm shifts assigned to them; please ensure you confirm your shifts in a timely manner.

- Swapping shifts is available among the members of individual labs. You may switch shifts without your leader's approval. However, your leader can view the history of any shift to determine when and who it was switched with.

Clocking-in and Clocking-out:

- **All personnel scheduled to be on-site MUST clock-in and clock-out either using the mobile app or through the web browser.** This must be done the moment they arrive at the hospital and the moment they are leaving the hospital.
 - The system uses geo-location tracking to determine if staff members are within 100 metres of the building. It will NOT allow you to sign-in or out if you are not within 100 metres. Note: the app does not track your movements within the hospital.

Dropping/Releasing Shifts:

- **If you are no longer required to be on-site for your shift, personnel must release their shift using the mobile app or through the web browser.** This ensures that capacity is not wasted and resources are reallocated to those who need them.

Cleaning of Workstations and Equipment:

- All personnel working on-site are expected to wipe down their workstations and any equipment they use at the beginning and end of your shift or usage respectively.
- Please ensure to use the hospital provided products to clean your workstations and any equipment.

Daily Electronic Attestations:

- At the end of each shift on-site, you are required to complete your electronic attestation at <https://www.surveymonkey.com/r/BRI-Electronic-Attestation>. This attestation will serve as a checklist to ensure you completed your on-site personnel duties prior to leaving the hospital.
- Audits will be conducted to ensure personnel are completing the attestations in a timely manner that is in alignment with your clock-out time via WIW.
- **Please complete this attestation BEFORE leaving the hospital.**

Participants and Visitors:

- All participants and visitors coming to the hospital must be [pre-screened](#) and will undergo screening at the door.
- Participants and visitors must adhere to the PPE directives as outlined by the hospital-at-large.
- **Researchers should anticipate potential delays due to line-ups to enter the hospital or cancellations of research visits due to failed screening.**

Standard language for communication with participants:

"Holland Bloorview Kids Rehabilitation Hospital is actively monitoring the COVID-19 pandemic and taking precautions to ensure the safety for all clients, families, staff, volunteers, and students as the situation progresses.

Clients and families coming to Holland Bloorview can expect some changes when they arrive to the hospital from what they are accustomed to. All precautions and measures implemented by the hospital have been put into place to ensure the safety of everyone in our community.

Please review <https://hollandbloorview.ca/stories-news-events/news/holland-bloorview-and-novel-coronavirus-covid-19> prior to attending on-site at the hospital. If you require an exception to the family

and caregiver policy, please contact jfong@hollandbloorview.ca. We will respond to your request within two (2) business days.”

- **Researchers must notify the hospital about upcoming participant visits by entering their full name, name of the caregiver (if applicable) and the name of the researcher that will meet the participant via REDCAP. Participants not on the entry list may not be permitted entry into the hospital. Information about vendors coming on-site must be entered using the same system.**
 - REDCAP Link: <https://redcap.hollandbloorview.ca/surveys/?s=9NMREYWRN7>
 - Notifications must be submitted by 11 p.m. the night before the participant’s visit.
- **Researchers must ensure there is adequate time between participant visit bookings, use of data collection rooms and shared equipment to ensure thorough cleaning before and after each occurrence.**
- **Researchers should meet their participants at the main atrium and escort them directly to the research visit to prevent wandering.** This process is being finalized by the hospital, thus may change in the near future.
 - **Participants should be escorted back to the main lobby/exit at the end of the research visit.**
- **Limitations on caregivers:** The hospital has a limited caregiver policy where only one caregiver may attend a client to their visit. Researchers should make every effort to encourage only one (1) caregiver to attend the visit.
 - If greater than one (1) caregiver is required due to safety issues or hardships to the families, the researcher should ask the family to follow the [Family Caregiver Exception Process](#).
- **Participant use of PPE:** Participants must wear a mask when on-site at the hospital. In the event your research protocol requires the mask to be removed, you must adhere to a minimum distance of 2-metres or have plexiglass between you and the participant.
 - **Research personnel are not exempt from the use of PPE, you must follow PPE directives at all times.**

PPE and Cleaning Supplies:

- The use of PPE at the hospital is mandatory. The type of mask provided will be determined at screening based on your plans for the work-day primarily around whether you have direct client interactions or not.
- To order from Stores: Please order PPE items via an email to #Stores at least 1-2 days in advance. Include the name and number of items required, as well as the account # to be charged. All orders placed must be picked up from Stores. For urgent requests, staff can come down with an account # but please note some PPE, including hand sanitizers and cavi-wipes, are currently in limited supply and may be rationed.
 - Goggles or Face Shields – are mandatory for anyone having participant interactions. If you require either one, please order these directly from Stores as per your team’s needs.
 - Cleaning wipes – cleaning wipes are available centrally across various sites in the BRI. Wipes will be provided in the 4W Mail Room, 4W385 Research Staff Room, 4W330 Student and Trainee Room, 4W Research Operations Office, and Autism Research Centre. They will not be distributed for individual lab spaces, you are to use them to only clean your workstation before and after your shifts, and any major equipment you use.

- Please only take the amount you need, if you require greater amounts as a direct result of your research protocol to wipe down supplies, minor equipment, and personal items, you must order them directly from Stores as per your team's needs.
- Gloves – gloves will be available centrally in the 4W Research Operations Office and Autism Research Centre. These are limited supplies to help ramp up research activities that involve direct interaction with clients. For ongoing needs as a result of your direct research protocols, please order them direct from Stores as per your team's needs.
- Hand sanitizers – they are available via the wall dispensers across the hospital.

Desk Assignments:

- With the exception of very few and select areas, desks are now considered hotel spaces to ensure physical distancing. There are no more assigned workstations. Do not use desks that have been cautioned off.
 - It is our collective responsibility to ensure workstations are thoroughly cleaned before and after our shifts to ensure the safety of our colleagues.
 - For those of you with laptops, please bring your laptop on-site and use a workstation with a laptop dock if possible, to save enough workstations workstations with PCs for those that do not have laptops.

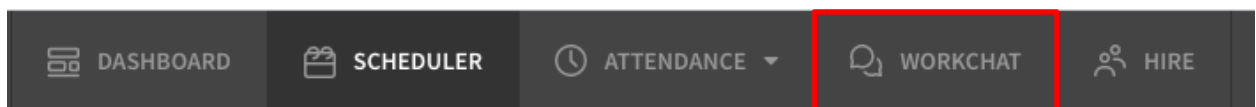
Meetings and Gatherings:

- All meetings that can be facilitated virtually should remain virtual.
- If in-person meetings are required, you must ensure all attendees are wearing masks.
- Gathering limitations are in place and shall be directed by the provincial health authorities.

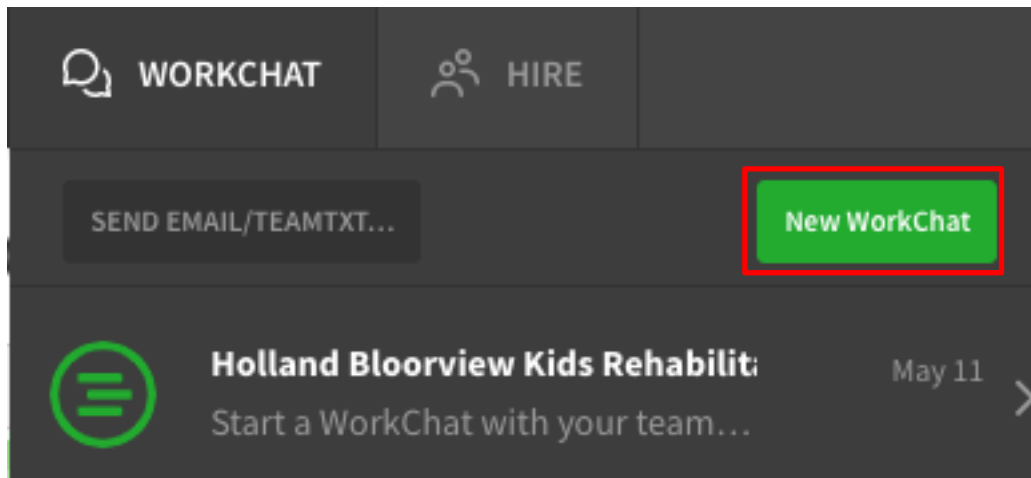
Work Chat Feature:

- Work chat allows you to connect with other members of leadership, staff or trainee that have an account on the system.
- You may create a Work Chat for your team specifically if you wish. To create a Work Chat for your team.

Step 1 – Select Work Chat from the top banner.



Step 2 – Select new Work Chat.



Step 3 – Select the members of the BRI you wish to add and name the chat group (optional).

* Steps 1 to 3 can also be used to speak with a single person.

**This chat feature can be used to reach out to all of BRI to ask if there is additional capacity within their teams in the event you need a last-minute shift that will exceed your capacity.

Appendix A – Pre-Screening Requirements and Logic Diagrams

Screening Form for Clients

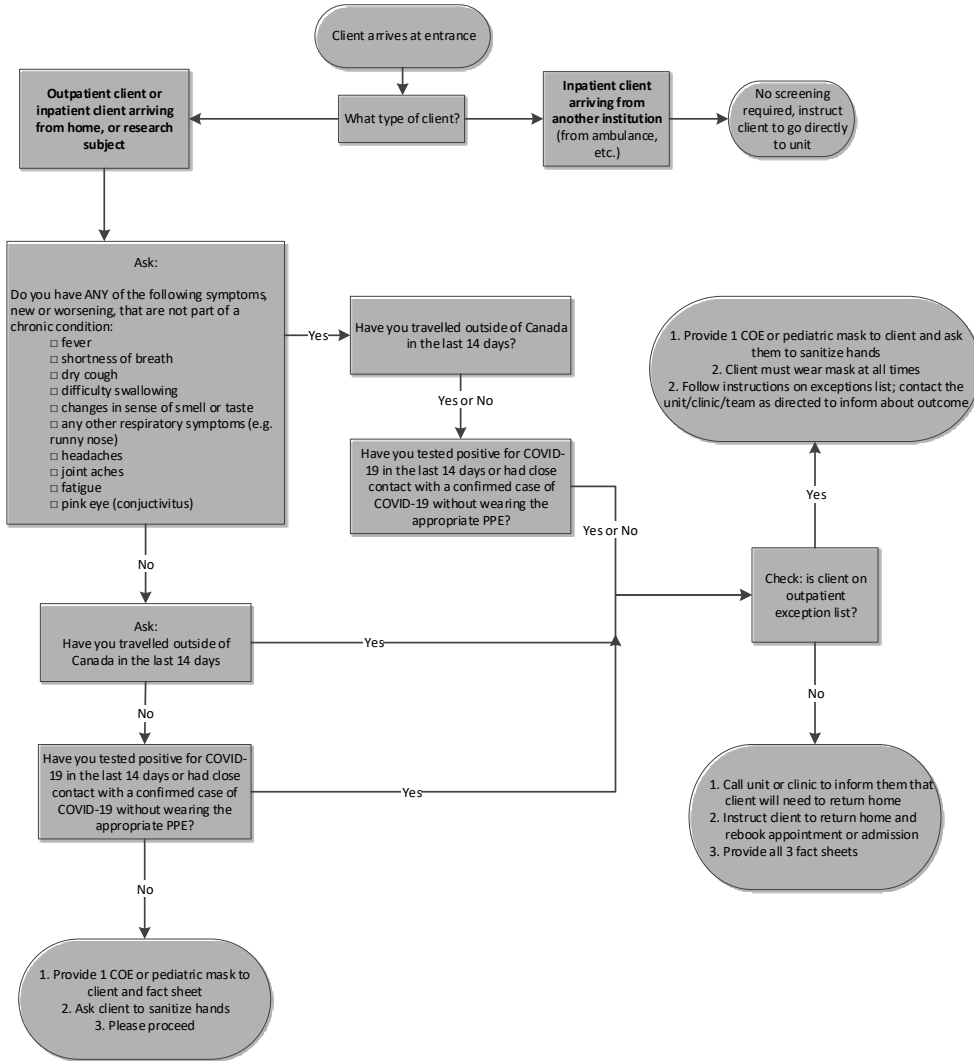
Client Name (first and last): _____
 Location of visit: _____
 Contact #: _____
 Date (YY/MM/DD): _____
 Time: _____ Screener initials: _____

Important Contacts

Telehealth 1-866-797-0000
 Public Health Hotline 416-338-7600

Website to find local public health units:
www.phdapps.health.gov.on.ca/phulocator/

Check off any symptoms and circle yes/no to each question.

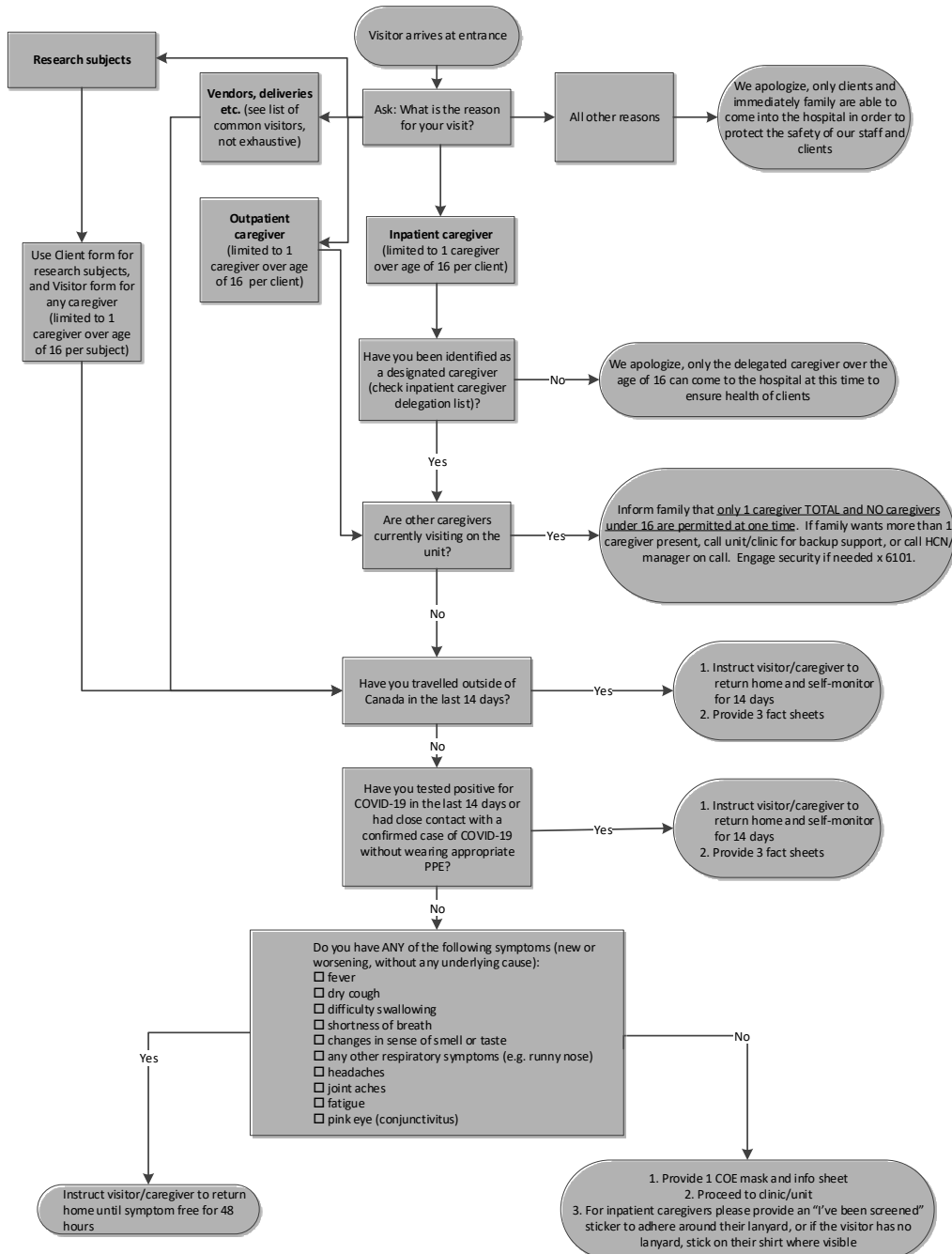


CLIENTS V8.5

Screening Form for Visitors

Client Name (first and last): _____
 Visitor/Caregiver name (first and last; limited to 1 caregiver over age 16 per client): _____
 Location of visit: _____
 Contact #: _____
 Date (YY/MM/DD): _____
 Time: _____ Screener initials: _____

Check off any symptoms and circle yes/no to each question.



VISITORS V9.5

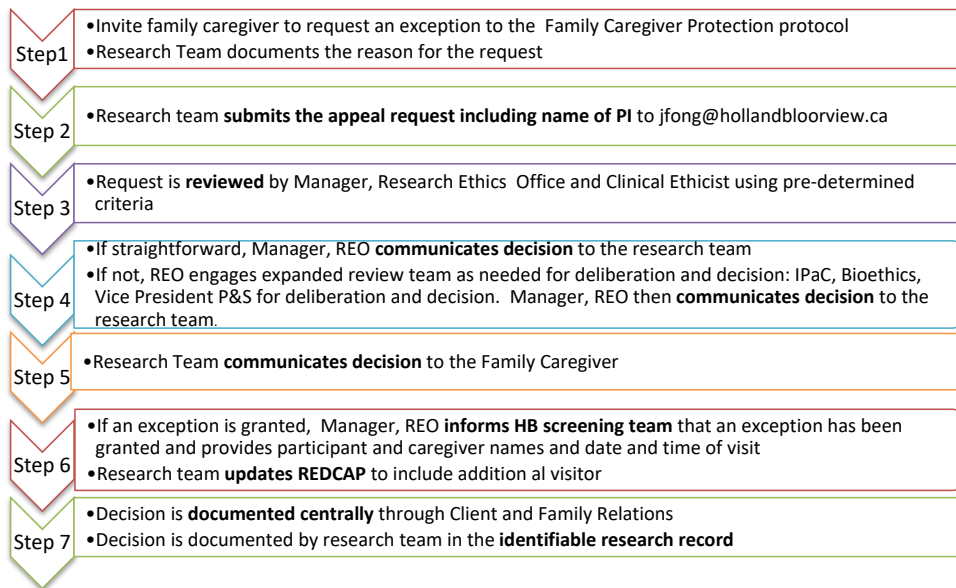
Appendix B – Family Caregiver Exception Process:



Purpose of this document

To give BRI staff guidance on how to triage family caregiver feedback and requests for an exception to the Holland Bloorview’s Pandemic Planning Family Caregiver Protection Protocol.

Appeals process:



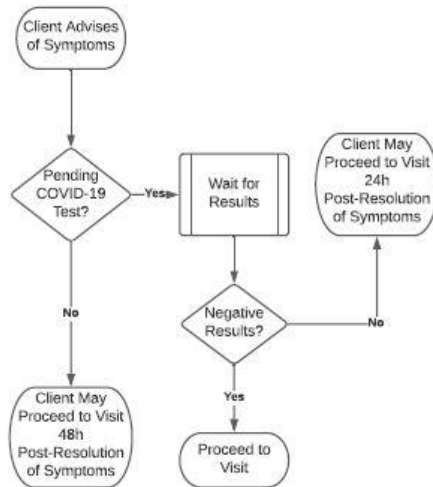
Note: Research staff should introduce the visitor restriction protocol and its rationale to family caregivers during the screening telephone call. If after this stage family caregivers still wish to make a request for an exception, the above process is triggered. **Exception requests will be reviewed within 2 business days. Please ensure that exception requests are submitted at least 3 business days prior to any scheduled research visit.**

Examples of circumstances that may lead to accommodating family appeals:

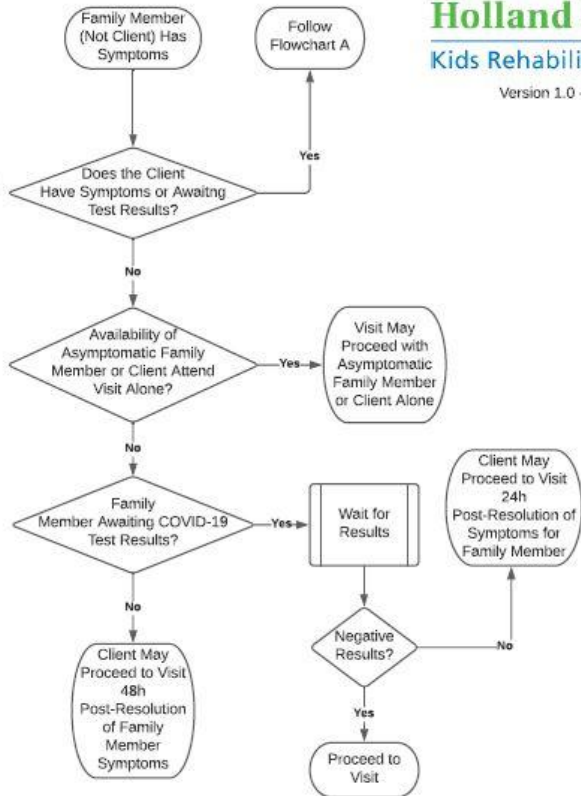
- Caregiver visitation requires on-site supervision by child protection agency (safety)
- Caregiver requires personal attendant for physical assistance while on-site (medical needs)
- Two or more caregivers are required on-site for clinical or research teaching (safety)

Appendix C

Flowchart A



Flowchart B



Holland Bloorview
Kids Rehabilitation Hospital

Version 1.0 - 2020-Nov-02