

# Community Snoezelen Room

**Holland Bloorview**  
Kids Rehabilitation Hospital

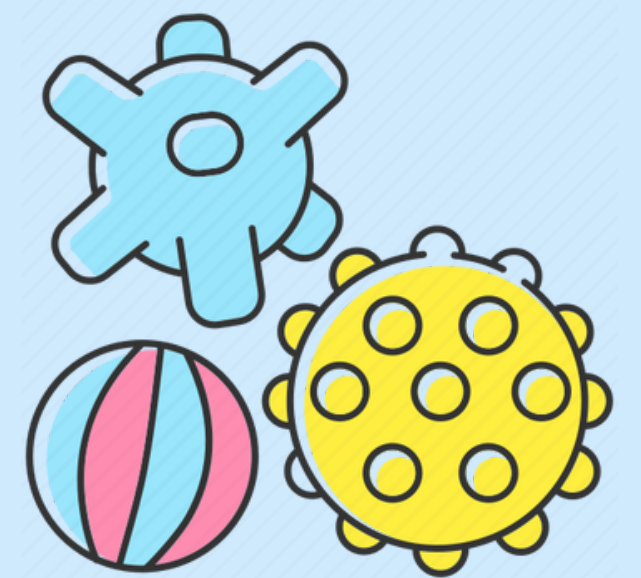
**SEEK | EXPLORE | RELAX**

## What is Snoezelen?

The Community Snoezelen Room combines music, lights, gentle vibrations, tactile sensations and cause and effect activities, which all provide opportunities for a unique sensory experience. It aims to provide an oasis of tranquility where you can relax and have the opportunity to choose an activity at your own pace.

## Who can use the Snoezelen Room?

- children and adults of all ages and disabilities!
- no medical referral required.



## Cost?

- \$11.69 (includes HST) per client, per visit (60-minute duration)
- \$28.75 (includes HST) group rate of 4 to 6 clients, per visit (60-minute duration)
- \$29.96 (includes HST) Snoezelen Room Training and Orientation (optional)

## When?

- Monday to Friday: 9:00am - 7:00pm
- Saturday and Sunday: 10:00am - 5:00pm
- Closed on holiday weekends and statutory holidays.



## Where?

Holland Bloorview Kids Rehabilitation Hospital  
150 Kilgour Rd, Toronto, ON M4G 1R8  
**Room: 1E165**

**Information and  
Booking Requests:**

## Questions?

**Mirusha Ravindran, Snoezelen Program Coordinating Clinician**

✉ [snoezelen@hollandbloorview.ca](mailto:snoezelen@hollandbloorview.ca)

☎ 416-425-6220 ext. 3184

