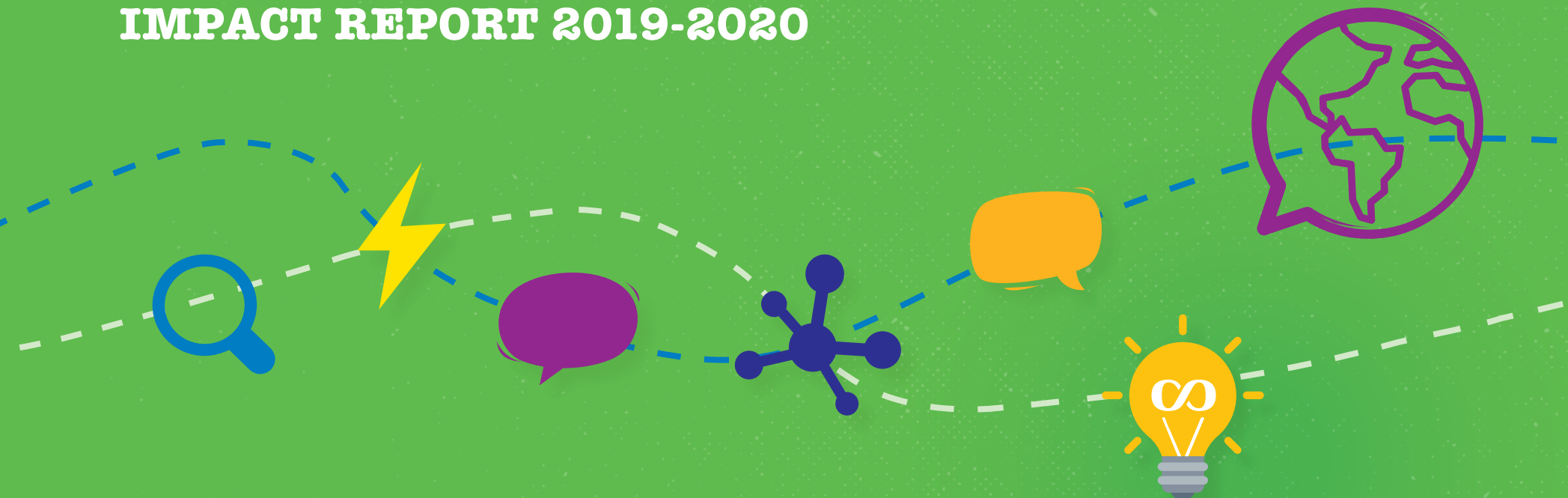


Dear Everybody, Together we can

IMPACT REPORT 2019-2020



Holland Bloerview
Kids Rehabilitation Hospital

Dear Everybody,

Every day, every year, you make an extraordinary impact.

In the days, weeks, and months of struggle and hardship as we confronted a global pandemic, you proved that together we can. And we're forever grateful for your continued support and commitment to our kids and families.

Together as a hospital, a team, and a community, we create the conditions for kids and youth with disabilities to have healthy and meaningful futures. Futures where disability and other complex needs are seen as a valued part of diversity. Futures where equity and inclusion are action items – not just words on a page.

And as we provide care, programs and services, we continue to drive forward our commitment to research, teaching and learning that is an equal part of our identity as an academic health sciences centre that is fully affiliated with the University of Toronto.

As you'll read in our stories this year, we advanced efforts to provide personalized, coordinated care that is firmly focused on the needs of our clients and families. We also embarked on a journey of transformational discovery, with the launch of expansion plans for the Bloorview Research Institute and the completion of an MRI suite that is state-of-the-art in accessibility and child friendliness – another global first for Holland Bloorview. Among other stories of impact, you'll also read about one of the latest successes of our transitions strategy providing new opportunities for young people with disabilities through on-the-ground employment training.

All this work would not have been possible without you – our community of supporters, donors of every level, committed volunteers and dedicated staff.

Thank you for creating a world of possibility. Thank you for being here for us.



Julia Hanigsberg
President and CEO,
Holland Bloorview Kids
Rehabilitation Hospital



Sandra Hawken
President and CEO,
Holland Bloorview Kids
Rehabilitation Hospital Foundation



Dr. William Onuwa
Chair, Board of Trustees,
Holland Bloorview Kids
Rehabilitation Hospital



Neil Selfe
Chair, Board of Directors,
Holland Bloorview Kids
Rehabilitation Hospital Foundation



About

Holland Bloorview

Kids Rehabilitation Hospital

At Holland Bloorview Kids Rehabilitation Hospital we are creating a world of possibility for children and youth living with disabilities, medical complexity, illness and injury.

Renowned for our expertise in partnering with clients, we provide exceptional client- and family-centred care to over 8,000 families who come through our doors each year.

As a top 40 Canadian research hospital that is fully affiliated with the University of Toronto, our innovations, research, teaching and evidence-informed care impacts the lives of children and youth within our walls and around the globe.

We are leading and modeling social change by eliminating stigma aimed at kids and youth with disabilities.

Our goal: The most meaningful and healthy futures for all children, youth and families.



Together as a hospital, a team, and a community, we create the conditions for kids and youth with disabilities to have healthy and meaningful futures. Together we create a world of possibility.



+10 CONSECUTIVE YEARS



+9 CONSECUTIVE YEARS



+8 CONSECUTIVE YEARS



2019

+3 TIME WINNER



+3 EXEMPLARY STATUS

By the numbers

See how you made an impact!
Read our stories at
togetherwecan.hollandbloorview.ca



Who we are



1,066
STAFF



527
TOTAL STUDENTS



1,024
VOLUNTEERS



207
NURSES



68
MEDICINE



79
RESEARCH



140
FAMILY LEADERS
VOLUNTEERED

1,894
HOURS



21
PHYSICIANS



142
NURSING



238
OTHER DISCIPLINES

95% OF STUDENTS
said they would recommend a placement
at Holland Bloorview to other students

Who we serve



8,741
TOTAL CLIENTS



451
INPATIENT
ADMISSIONS

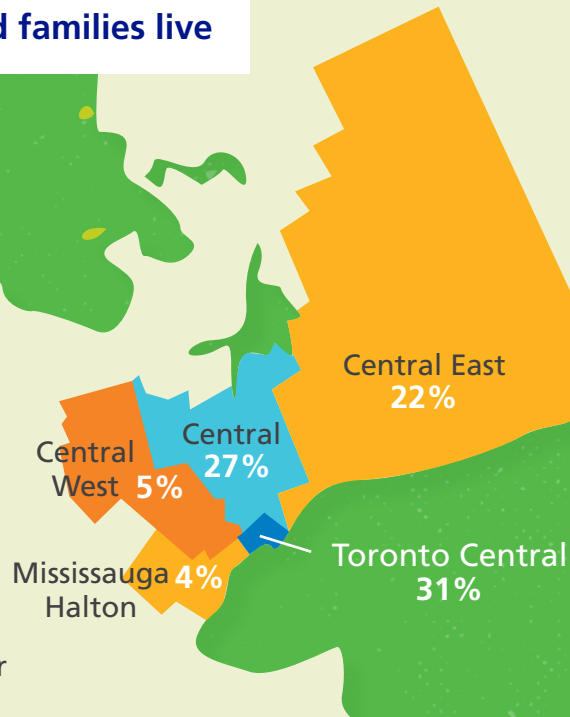


55,076
OUTPATIENT
VISITS

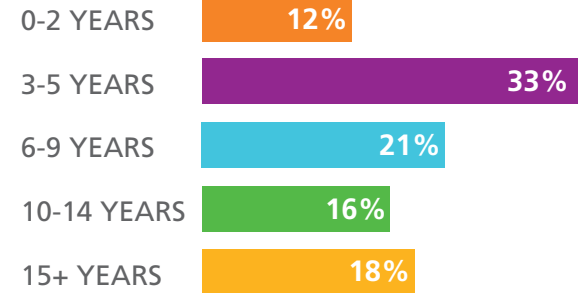


2,326
NUMBER OF
UNIQUE DIAGNOSES

Where our clients and families live



Ages of clients



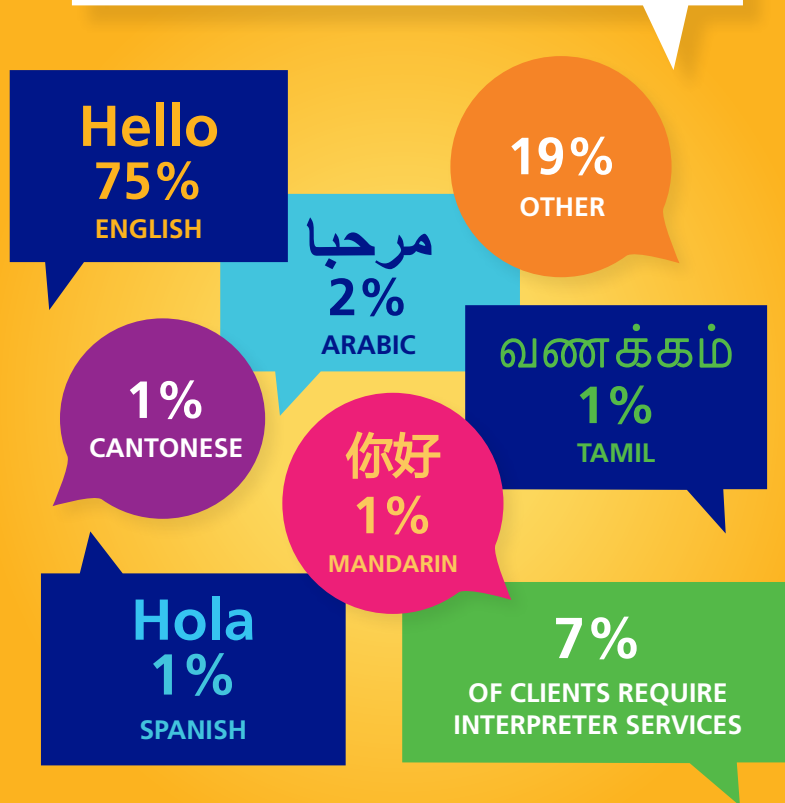
Gender distribution



Family average household income after tax



Top languages spoken by families



155
TRANSLATED
DOCUMENTS ON
OUR WEBSITE

Serving our clients



3,070
VIRTUAL
APPOINTMENT
VISITS

Increasing access to care during COVID-19

As part of our pandemic response, we hosted **1,836 virtual appointments** in March-April 2020 compared to 1,234 in the 10 months prior. We will continue to increase access to virtual care post-pandemic.

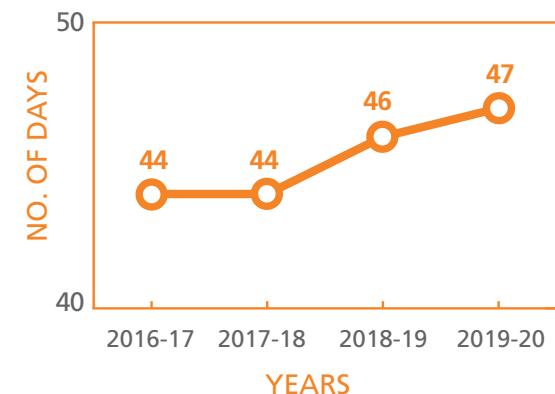


Average length of stay for inpatient rehabilitation

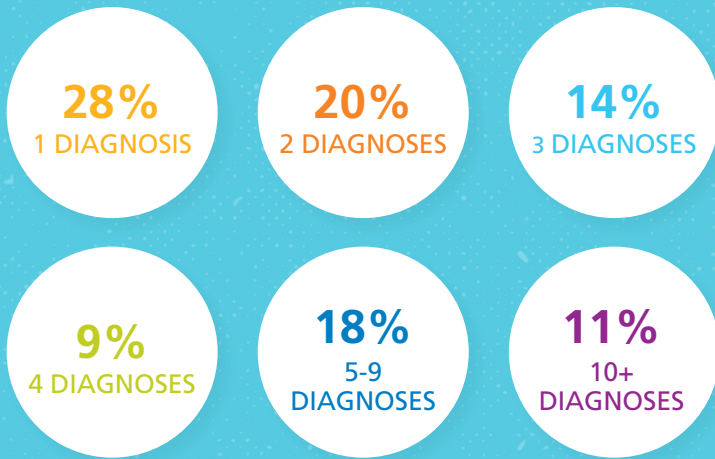
Over the years, our overall length of stay has increased slightly as we continue to care for more clients with spinal cord injuries and other conditions that require longer post-surgical rehabilitation. Length of stay can also be longer as the availability of community resources—such as nurses trained in pediatric tracheostomies and mechanical ventilators—are confirmed before we safely discharge clients back to the community.



47 DAYS
AVERAGE LENGTH
OF STAY



Complexity of the clients we serve



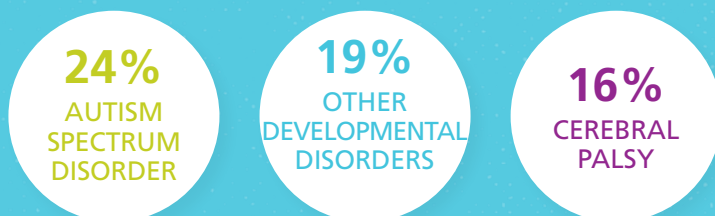
72%
CLIENTS WITH MORE
THAN ONE DIAGNOSIS

Most common diagnoses

Inpatient



Outpatient



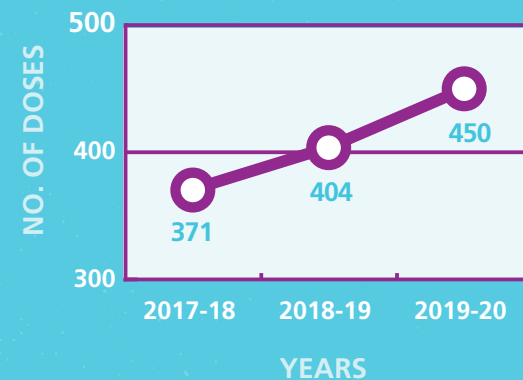
LAST YEAR,
ADMISSIONS OF
MEDICALLY COMPLEX
CLIENTS DOUBLED
IN NUMBER TO 22

These children require highly specialized care coordination and system solutions for successful transition back to their home and community. Many require technology including feeding tubes and ventilators to survive.



AVERAGE MEDICATION
DOSES PER CLIENT

Another indicator of medical complexity is the amount of medication doses administered per inpatient client. In the past three years, there's been a steady increase.





166

KIDS PARTICIPATED
IN OUTPATIENT
MUSIC THERAPY
PROGRAMS



112

KIDS
PARTICIPATED
IN ART
PROGRAMS



743

FAMILIES
ACCESSED THE
FAMILY
SUPPORT FUND



1,065

INPATIENT VISITS
FROM OUR
THERAPEUTIC
CLOWNS

connect2care

3,770

FAMILIES REGISTERED
FOR ONLINE ACCESS
TO THEIR PATIENT
RECORDS



211

KIDS PARTICIPATED
IN SPIRAL GARDEN



401

CLIENTS AND FAMILIES
PARTICIPATED IN
FAMILY WORKSHOPS
AND EVENTS



1,636

FAMILY INFORMATION
CONSULTATIONS
CONDUCTED
BY THE FAMILY
RESOURCE CENTRE
(INCREASE OF 476 FROM
THE PREVIOUS YEAR)

BLOOM

READERS IN

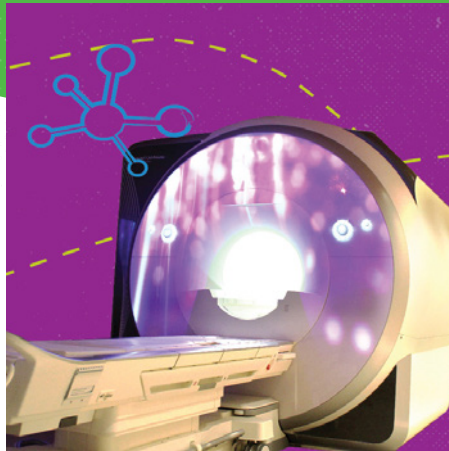
130

COUNTRIES
ARE READING
OUR BLOOM
BLOG



See how you made an impact!

Read our stories at togetherwecan.hollandbloorview.ca



RESEARCH

Making MRIs easier one scan at a time

If you asked Dr. Tom Chau what visuals he'd want projected in the MRI suite, he'd opt for outer space. These projections are only one of the innovative ideas incorporated into Holland Bloorview's newest addition: Canada's first-ever fully-accessible, immersive, child-friendly, and customizable research MRI.



SUPPORTING FAMILIES

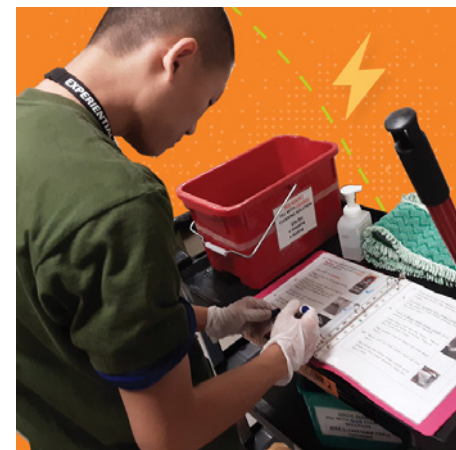
Sibling support resource unveiled for kids with an acquired brain injury

For a lot of kids, the longest relationship in their lives will be with their siblings. And it's a reality Daniel and Melissa know all too well. That's why it was no surprise when both were tasked with consulting for Holland Bloorview's SibKit: a 50-page booklet and resource for siblings of children who experience brain injury.

YOUTH EMPLOYMENT

Project SEARCH: Training students to be workforce ready

We partnered with UHN Toronto Rehab as host sites for the first-ever cohort of Project SEARCH in Toronto. This school-to-work transition program helps youth with developmental and intellectual disabilities develop competitive, transferable skills for entry-level employment. Other program partners include Community Living Toronto, Ontario Disability Employment Network, Toronto District School Board, and United Way Greater Toronto.





TEACHING AND LEARNING

Family as faculty: Holland Bloorview parents teach client- centred care at U of T

As a leading teaching hospital, we are always looking for innovative approaches to training the next generation. That's why some of our families and clients—through our Family as Faculty program—used their voices and experiences to co-teach a Master's-level social work course at the University of Toronto.

TECHNOLOGY

Taking research from the workspace into the marketplace

While Dr. Elaine Biddiss admits she's not the biggest gamer, that didn't stop her and her team from creating Botley's Bootle Blast: a mixed-reality video game that helps kids at Holland Bloorview with cerebral palsy achieve their therapy goals. And soon, children beyond the hospital will get to participate, too.



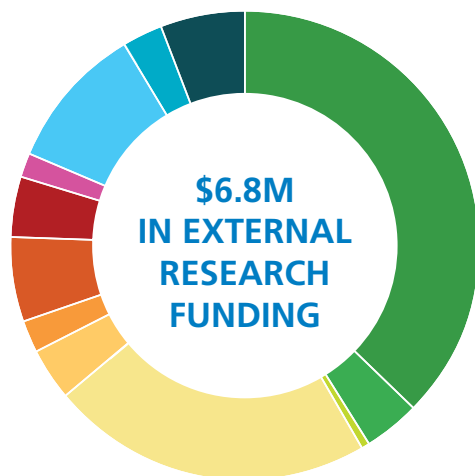
COMMUNITY

Volunteering at the start of a pandemic

When Lauren first decided to volunteer over March Break, she had no idea she'd be faced with the rapidly changing protocols amid the COVID-19 pandemic. But while some people may worry at the thought of going into a hospital full-time during a global pandemic, Lauren had no qualms, thanks to the precautions the hospital had in place.

Bloorview Research Institute

By the numbers



- 37.40% TRICOUNCIL
- 3.80% FEDERAL
- 0.48% CANADIAN FOUNDATIONS, SOCIETIES AND ASSOCIATIONS
- 22.33% PROVINCIAL
- 3.63% INTERNATIONAL
- 2.10% OTHER – PEER REVIEWED
- 5.88% DONATIONS
- 4.20% SCIENTIST AWARDS
- 1.83% STUDENTSHIPS
- 9.89% SUB GRANT COLLABORATIONS
- 2.64% INDUSTRY SPONSORSHIPS
- 0.14% ROYALTIES/OTHER SOURCES OF FUNDING
- 5.67% INDIRECTS

Our scientists

2
DISTINGUISHED
SENIOR
SCIENTISTS

10
SENIOR
SCIENTISTS

5
SCIENTISTS

15
CLINICAL TEAM
INVESTIGATORS

10
CLINICIAN
SCIENTIST
INVESTIGATORS

42
TOTAL NUMBER
OF SCIENTISTS/
INVESTIGATORS

2
CANADA
RESEARCH
CHAIRS

6
HOSPITAL
UNIVERSITY
ENDOWED
CHAIRS

79
PEER
REVIEWED
PAPERS
PUBLISHED

Our research trainees

28
UNDERGRADUATE

33
MASTERS

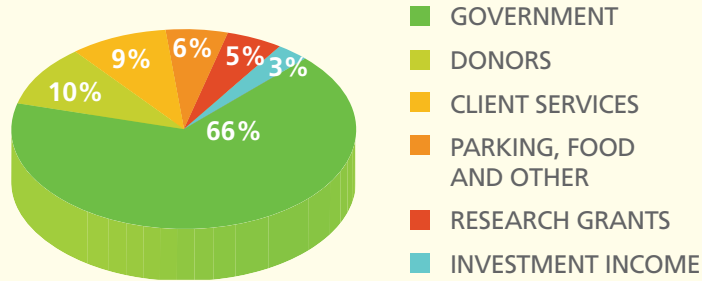
43
PhD

15
POST-DOC
FELLOW

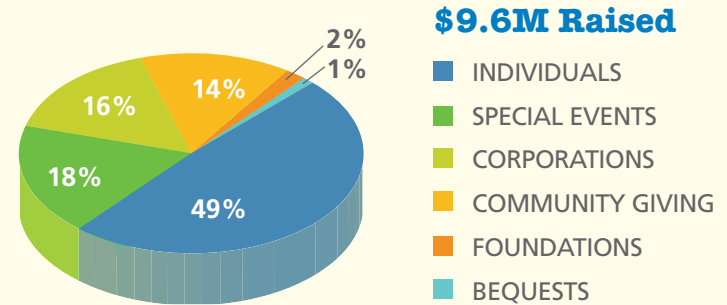
18
CLINICAL
STUDENT

Financial information

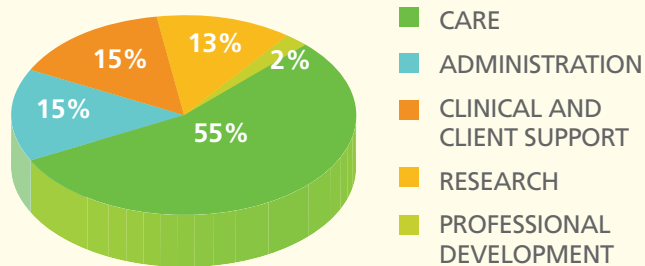
Where do hospital funds come from?



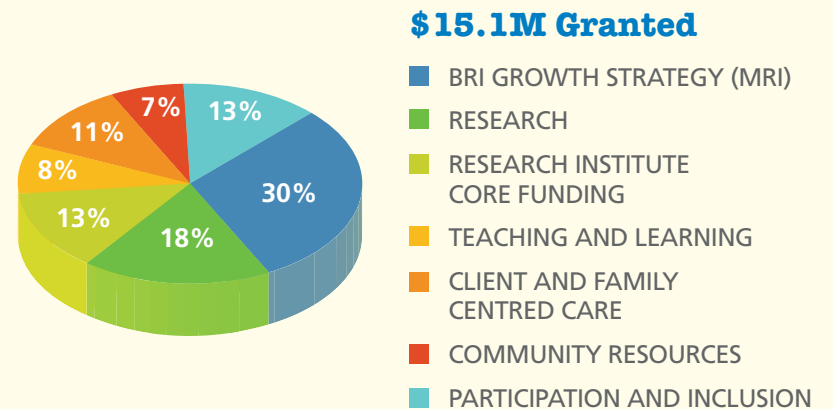
Where do foundation funds come from?



How do we spend hospital funds?



How do we grant foundation funds?



To read how you're making an impact visit

togetherwecan.hollandbloorview.ca

Holland Bloorview

Kids Rehabilitation Hospital

A TEACHING HOSPITAL
FULLY AFFILIATED WITH  UNIVERSITY OF
TORONTO

Holland Bloorview

Kids Rehabilitation Hospital Foundation

Charitable Business # 88932-6278-RR0001

Holland Bloorview Kids Rehabilitation Hospital
150 Kilgour Road, Toronto, ON M4G 1R8
416-425-6220 info@hollandbloorview.ca
hollandbloorview.ca

Follow us



The web and PDF versions of the impact report are accessible for screen readers and other accessible technologies.