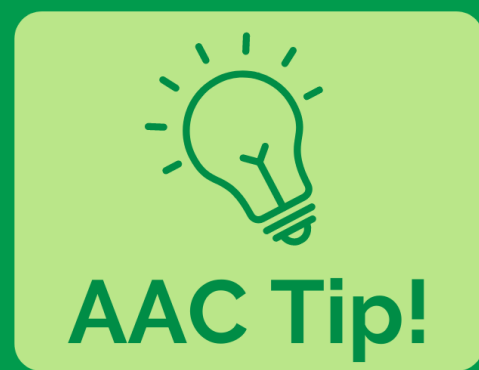
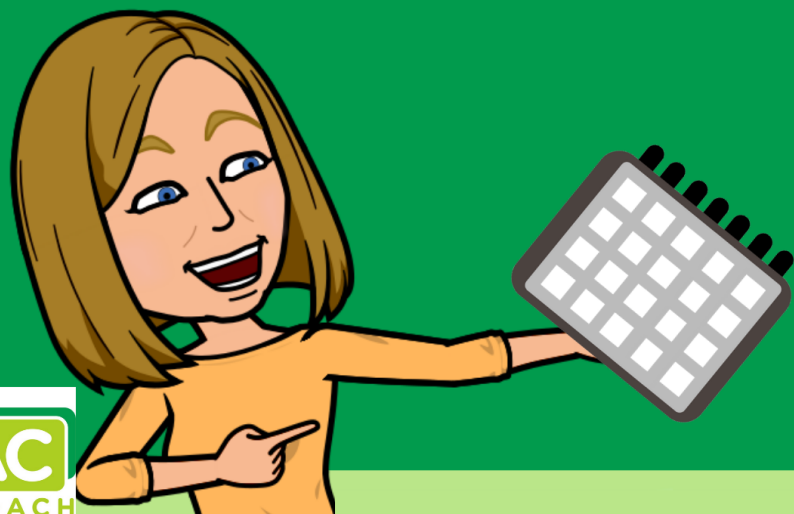


Don't assume it's a mistake!

When your AAC learner says something that doesn't make sense to you, don't be too quick to write it off as a mistake! There are lots of reasons that you might not understand. You don't know what they want to say! Assuming it is a mistake is the fastest way to shut down conversation!

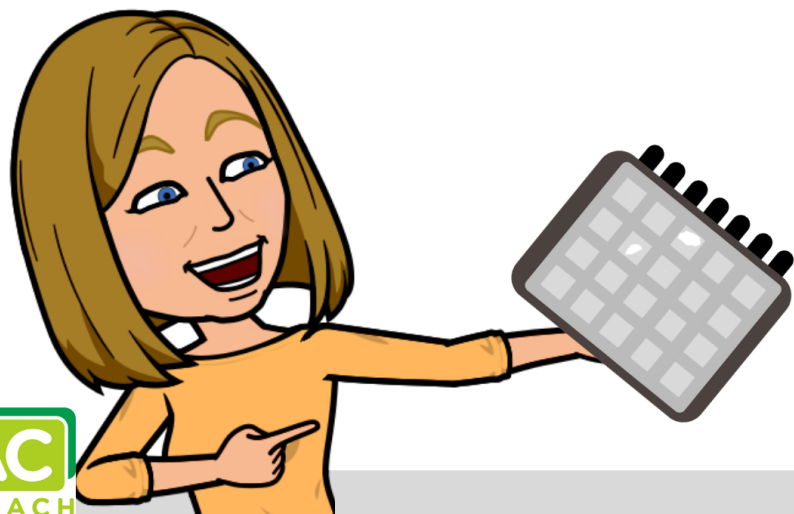
- Try to make a connection to the immediate or known context and respond! Your response tells them what they did was meaningful to you.
- Use AAC to model ideas about what they might mean and then encourage them to expand their message.
- If you're still not sure, just say so! It is feedback that will support their learning and future communication attempts.
- Respecting their attempt and continuing the conversation shows you are in it together. Even if you don't come to complete understanding, lots of learning will happen for everyone involved!



Don't assume it's a mistake!

When your AAC learner says something that doesn't make sense to you, don't be too quick to write it off as a mistake! There are lots of reasons that you might not understand. You don't know what they want to say! Assuming it is a mistake is the fastest way to shut down conversation!

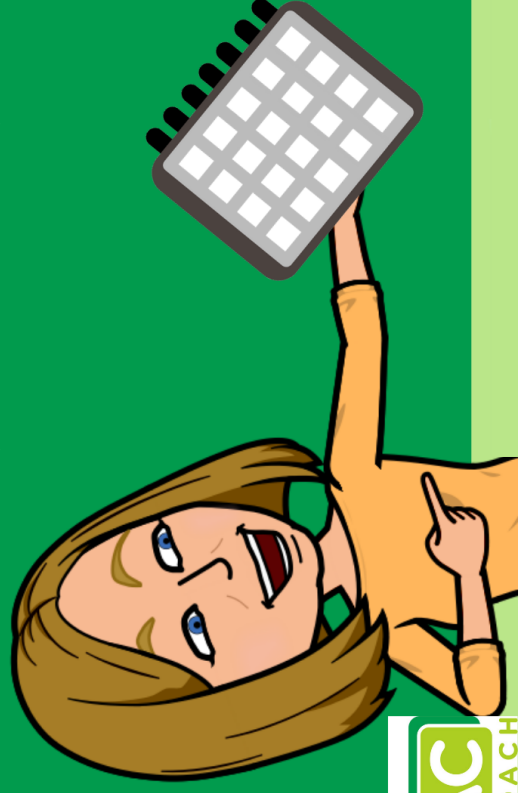
- Try to make a connection to the immediate or known context and respond! Your response tells them what they did was meaningful to you.
- Use AAC to model ideas about what they might mean and then encourage them to expand their message.
- If you're still not sure, just say so! It is feedback that will support their learning and future communication attempts.
- Respecting their attempt and continuing the conversation shows you are in it together. Even if you don't come to complete understanding, lots of learning will happen for everyone involved!



Don't assume it's a mistake!

When your AAC learner says something that doesn't make sense to you, don't be too quick to write it off as a mistake! There are lots of reasons that you might not understand. You don't know what they want to say! Assuming it is a mistake is the fastest way to shut down conversation!

- Try to make a connection to the immediate or known context and respond! Your response tells them what they did was meaningful to you.
- Use AAC to model ideas about what they might mean and then encourage them to expand their message.
- If you're still not sure, just say so! It is feedback that will support their learning and future communication attempts.
- Respecting their attempt and continuing the conversation shows you are in it together. Even if you don't come to complete understanding, lots of learning will happen for everyone involved!

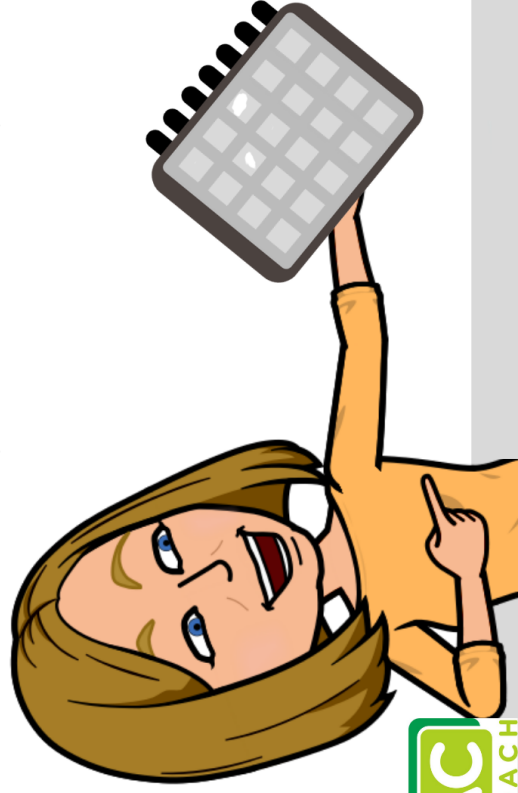


AAC Tip!

Don't assume it's a mistake!

When your AAC learner says something that doesn't make sense to you, don't be too quick to write it off as a mistake! There are lots of reasons that you might not understand. You don't know what they want to say! Assuming it is a mistake is the fastest way to shut down conversation!

- Try to make a connection to the immediate or known context and respond! Your response tells them what they did was meaningful to you.
- Use AAC to model ideas about what they might mean and then encourage them to expand their message.
- If you're still not sure, just say so! It is feedback that will support their learning and future communication attempts.
- Respecting their attempt and continuing the conversation shows you are in it together. Even if you don't come to complete understanding, lots of learning will happen for everyone involved!



AAC Tip!