

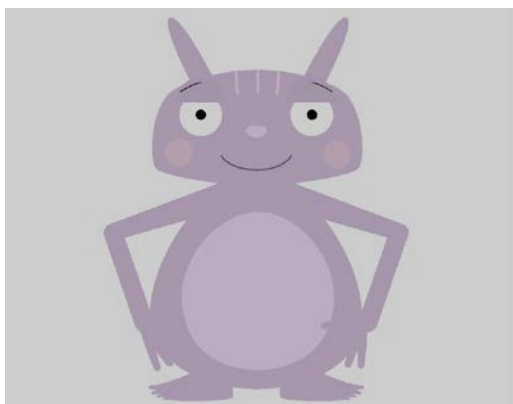
Participate in Research

Project LEApp (Learning to Eat App): Developing an iPad-based video modeling intervention and exploring its feasibility in increasing food variety in children with Autism Spectrum Disorder (ASD).



Principal Investigator: Dr. Sharon Smile

Centre for Leadership: Child Development Project



LEApp
Learning To Eat App

CONTACT INFORMATION:

TO ASK QUESTIONS OR TO SIGN UP, CONTACT:

Julia Hemphill
jhemphill@hollandbloorview.ca
416-425-6220 ext. 3801

Date Posted:

Version Date: 30 May 2018

Do you care for a child diagnosed with Autism Spectrum Disorder and feeding difficulties?

What is this study about?

We are developing a new iPad based intervention to address feeding difficulties in children diagnosed with Autism Spectrum Disorder.

Who may participate?

We are looking for **Children:**

- Aged 2-4 years (inclusive), who are diagnosed with ASD
- Have a history of feeding difficulties
- Feeds him or herself independently
- Are able to manipulate an iPad tablet

What's involved?

- Children and caregivers will attend a 1-hour training session at Holland Bloorview, where they will be shown how to use LEApp
- Children and caregivers will use LEApp within the home for 14 days.
- Caregivers will be asked to complete a questionnaire that will rate the ease of use of the LEApp.

Potential Benefits?

- **LEApp** has the potential to deliver early feeding intervention to preschoolers.

Potential Risks?

- Participants may feel distressed during the training session.

REB #: 16-683