

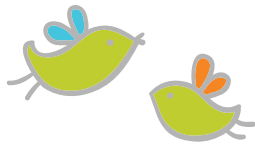
Centre for the Arts

The Centre for the Arts program at Holland Bloorview offers a wide range of integrated programming for children and youth of all abilities.

How to register

To register, please complete the form on our website at www.hollandbloorview.ca/arts and return it by mail, hand delivery or fax.

Holland Bloorview Kids Rehabilitation Hospital
150 Kilgour Rd
Toronto, ON M4G 1R8
c/o Centre for the Arts



Fax: 416-422-7037.

If you have questions, call us at 416-425-6220 ext. 3317 or send an email to: musicandart@hollandbloorview.ca.

(Unfortunately, email registration is not available.)

Written confirmation of programming will be mailed to you prior to your first session.

Registration deadlines

Fall: September 6, 2013 (for arts programs)
August 30, 2013 (for music programs)

Winter: December 27, 2013 (for all programs)

Applicants are welcome to register for the fall and winter seasons.

Registration must be submitted by the deadline to be accepted into the requested program(s).

Cancellation policy

To receive a refund, the participant must withdraw from a seasonal program at least two weeks prior to the program start date. A \$50 service charge will be deducted. For cancellations with less than two weeks notice, the full amount will be charged.



Centre for the Arts

Fall/winter 2013-14

Music

Fall music programs

September 14 – November 30

10 weeks
There will be no classes October 12-14.
The makeup week ends December 7.
*Fall recital will occur on Saturday, December 7.

Winter music programs

January 11 – March 22

9 weeks
There will be no classes
February 15-17 and March 8-14.
The makeup week ends March 31.

Music therapy assessment

Assessment is the first step in our music process. How an individual functions within a musical environment helps us to understand how music can help realize potential (including musical). Clients will receive a report that lays out process and client goals.

Ages 3 – 18	Assessments can be scheduled individually with the Music Therapist at any time during the year	\$150 (3 sessions) up to 30 mins. per session
----------------	--	--

Music therapy

Music therapy can help individuals develop social skills, confidence and self-esteem, while having fun and interacting with instruments, peers, and therapists. Each participant must begin with an assessment and will then be referred to a music therapy program. Although we offer one-on-one classes, the opportunity to participate with peers in group music-making is ideal.

Ages 3 – 18	One-on-one music therapy up to 30 mins. per session Fall \$500 (10 sessions) Winter \$450 (9 sessions)	Group music therapy (45 minutes each) Saturdays 10:15 a.m., 11:15 a.m. or 12:15 p.m. Fall \$250 (10 sessions) Winter \$225 (9 sessions)
----------------	--	---

Music lessons

Learn to play an instrument! Our instructors use a variety of traditional and adapted instruments and innovative technology for people with and without special needs. Shared lessons between two students are available for ages 4 to 6, if preferred. Instruments include: the Virtual Musical Instrument (VMI), piano, guitar, voice, violin and percussion. A variety of teaching methods are used including elements of the Suzuki method and the Figurenotes notation system.

(The VMI is music software developed at Holland Bloorview. The program allows musicians to see themselves on a screen, draw colourful shapes around their reflection and assign instruments to each shape. When the musician moves through the shapes, music is produced!)

Ages 4 +	Openings are available for both individual and shared lessons for both fall and winter. Monday to Thursday & Saturday	Fall \$360 (10 individual and recital) \$250 (10 shared and recital)
		Winter \$295 (9 individual) \$200 (9 shared) per student

"All By Myself" music group

Boost your child's confidence in a fun, integrated musical environment. We explore sharing and turn taking in the music, different musical emotions and offer opportunities for leadership. We also practice separation from parents and/or helpers in preparation for the big transition to kindergarten.

Ages 3 – 5	Saturdays 9:15 – 10:00 a.m.	Fall \$160 (10 sessions) Winter \$145 (9 sessions)
---------------	--------------------------------	---

*Please note that one-on-one music lessons and therapy require 24 hr. cancellation notice to reschedule, otherwise the session is forfeit. The sessions must be completed within a seasonal block and cannot be carried over. At the beginning of a season, your instructor or therapist will notify you of your options for a maximum of one make-up session.

Visual and performing arts

Fall arts programs

September 21 – December 6

10 weeks

There will be no classes October 11-14.
The makeup week ends December 13.

Winter arts programs

January 11 – March 22

9 weeks

There will be no classes
February 14-17 and March 8-15.
The makeup week ends March 31.

Art kitchen (fall only)

Cut, chop, cook and create in the art kitchen. We will harvest the bounty from the garden, cook meals, make art and design projects together inspired by fresh, seasonal ingredients and ideas.

Ages	Tuesdays	\$250
6 – 12	5:00 – 7:00 p.m.	

The kindler project (winter only)

The project will be an exploration and extension, individually and collectively, of Spiral Garden practices. We will weave together movement, music, visual arts, story and play culminating in a final evening of mystery happenstance.

Ages	Tuesdays	No cost
17+	6:30 – 8:00 p.m.	

Light writers (fall only)

Come share the magic and learn how your digital camera works, the creative functions of Photoshop, and how to take pictures to say what you want to say.

Ages	Tuesdays	\$250
13 – 18	6:00 – 8:00 p.m.	

Drum circle

Come together in a circle of rhythm, rhymes, beats, friends and folly. You will have the opportunity to play with a range of percussive devices. We will gather around the fire in the garden or in the studio if the autumn eve is cool and damp.

Ages	Thursdays	Fall	\$200
13 +	6 :30 – 8:00 p.m.	Winter	\$180

Dance theatre

Participants will enjoy being creative together through a playful exploration of movement, dance, drama and visual art. At the end of our session a performance sharing piece will celebrate this warm and inclusive social opportunity for self-expression.

Ages	Fridays	Fall	\$200
12+	4:30 – 6:00 p.m.	Winter	\$180

Special events

Harvest festival

Join us for our harvest festival on October 20, 2013.

Winter solstice celebrations

Winter solstice celebrations December 21, 2013.

The fall recital

For music education students December 7, 2013.

Arts xpress

Interact and play through music, visual arts, drama, puppetry, stories and sensory activities. This program is for special needs participants and their siblings.

Ages	Saturdays	Fall	\$200
4 – 12	9:30 – 11:00 a.m.	Winter	\$180

Paint and clay

Artists offer ceramics and painting to the participants in a dynamic environment encouraging individual creativity and imagination.

Ages	Saturdays	Fall	\$200
6 – 18	2:00 – 3:30 p.m.	Winter	\$180

Fountain of youth open studio apprenticeship

Teens with previous experience in the Centre for the Arts are invited to apply to assist in one of the visual and performing arts programs in order to gain leadership skills and earn community service hours. Check out our programs and get in touch with us to match you up with one that interests you. This is an opportunity to take on a mentoring and leadership role with participants in all Centre for the Arts programs.

Ages	Days and time to be determined according to program suitability and participant interests.	\$105
14+		

March break dance theatre camp

Act! Sing! Dance! This year's program will continue to have dance/movement activities, games, and performance but will now include stronger drama and music components. Children will also get to participate in mask or puppet making.

Ages	Monday to Friday	\$325
12+	March 10 – 14	
	9:30 a.m. – 3:30 a.m.	

Weekend respite day program and smart centres creative arts march break respite camp

We offer a range of respite services to support families. Priority is given to those with complex physical disabilities and/or developmental delays. Clients who require medication, G-tube feeds or specialized routines are supported by a registered practical nurse. Please visit our website: www.hollandbloorview.ca/respite for dates, information and how to register.