

# Who we serve

## 2015/16



**Holland Bloorview Kids Rehabilitation Hospital**

150 Kilgour Road, Toronto, ON M4G 1R8

Tel: 416-425-6220 Toll-Free: 800-363-2440

Fax: 416-425-6591 E-mail: [info@hollandbloorview.ca](mailto:info@hollandbloorview.ca)

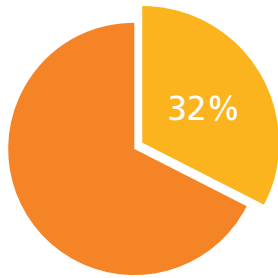
[www.hollandbloorview.ca](http://www.hollandbloorview.ca)

**Holland Bloorview**  

---

**Kids Rehabilitation Hospital**

# General rehabilitation facts and information



High intensity, chronic and complex care needs result in high resource utilization with 32% of **total healthcare spending attributed to this population.**<sup>1,2</sup>



School age children with disabilities in Ontario reported using an average of

**5 different health providers**

and 1/3 reported using between

**6 and 13 services.**<sup>5</sup>



A five year forecast (2007-2011) of the prevalence of children with complex special needs in Ontario and Canada estimates between 3.8% and 8% of Ontario children and youth, as many as

**2.94 million,**  
have or will have a functional limitation associated with a chronic condition.<sup>1,2</sup>



The cost of raising a child with a disability can be up to

**3 times**  
that of raising a typically developing child.<sup>3</sup>



Approximately

**50%**  
of children with a disability require some form of **assistive technology.**<sup>4</sup>

In Ontario alone, 15,770 children are deemed medically complex with

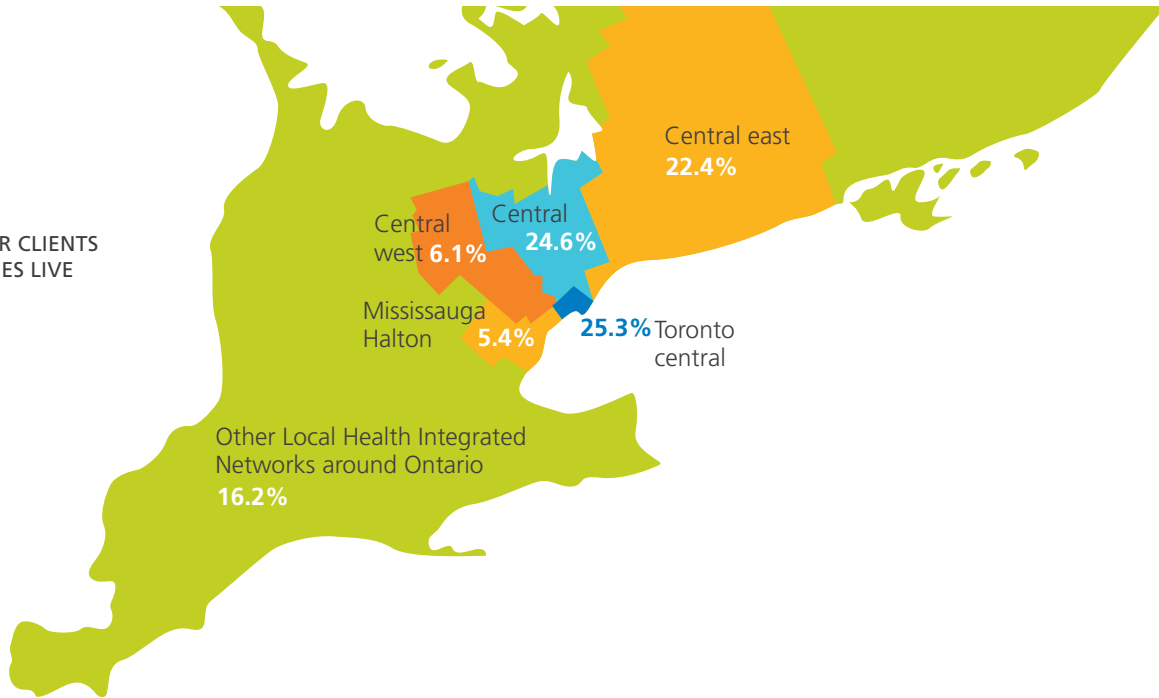
**\$419 million**  
spent annually to support their care.<sup>1,2</sup>

(Source: <sup>1</sup>PCMCH Provincial Symposium – Informing a Provincial Strategy for Integrated Care Coordination for Children with Medical Complexity (CMC). March 6th 2014., <sup>2</sup>Health Comes Home: A Conversation of Children with Complex Health Needs – Part 3. Ontario Association of Community Care Access Centres. <sup>3</sup>Council for Disabled Children, 2007; <sup>4</sup>Statscan, 2008a; <sup>5</sup>King et al., 2006)



# Who we serve – 2015/16

WHERE OUR CLIENTS AND FAMILIES LIVE



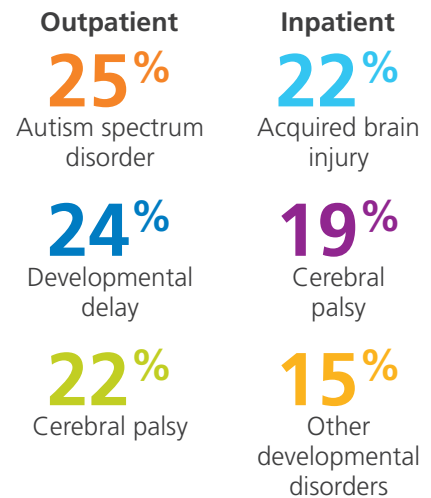
## Quick facts

### GENDER DISTRIBUTION



Total number of **outpatient visits** was **54,935**

### Most common diagnoses



**64.7%** of all clients we serve **have three or more diagnoses**

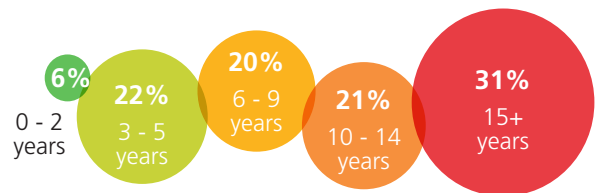
### COMPLEXITY OF CLIENTS WE SERVE

1 diagnosis	16.1%
2 diagnoses	19.2%
3 diagnoses	13.7%
4 diagnoses	15.6%
5-9 diagnoses	24.5%
10-14 diagnoses	9.4%
15 and more diagnoses	1.5%

**48%** of all clients served were the **age of 9 and under**

**72%** of our clients at the level of the organization are from the **Central, Toronto Central and Central East** Local Health Integrated Network

### AGE OF CLIENTS



# Who we serve – 2015/16

## Health equity survey



**88.6%**

of families indicated that English is the language they wish to **communicate in about their child's care**



**40%**

of families responded that they were **born outside of Canada**



**75.6%**

of all families reported having **post-secondary education**



**64%**

of families reported **owning their home**



**11%**

of families feel most comfortable communicating in **other languages**

**7.8%**

of our children have been identified as **non-verbal**



**84.5%**

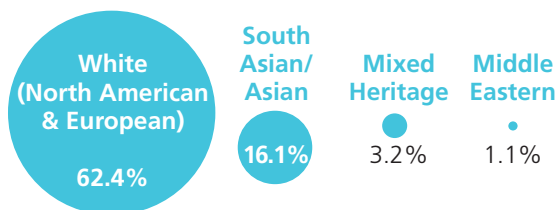
reported being **heterosexual**

### FAMILY INCOME

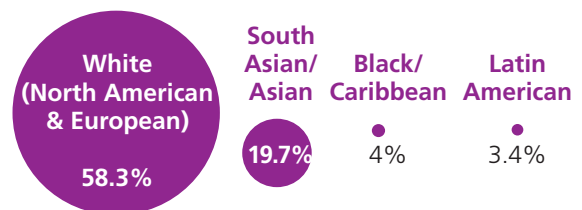


\$0 to \$29,999	15.5%
\$30,000 to \$59,999	14%
\$60,000 to \$89,999	14.2%
\$90,000 to \$119,999	10.6%
\$120,000 to \$149,000	9.1%
\$150,000 and over	18.4%
Other	18.3%

### TOP 4 ETHNIC GROUPS OF CHILDREN



### TOP 4 ETHNIC GROUPS OF CAREGIVERS



Source: Toronto Central Local Health Integrated Network survey 2015/16.

