

A world of possibility through Teaching and Learning

To **transform care** for our clients and families through...

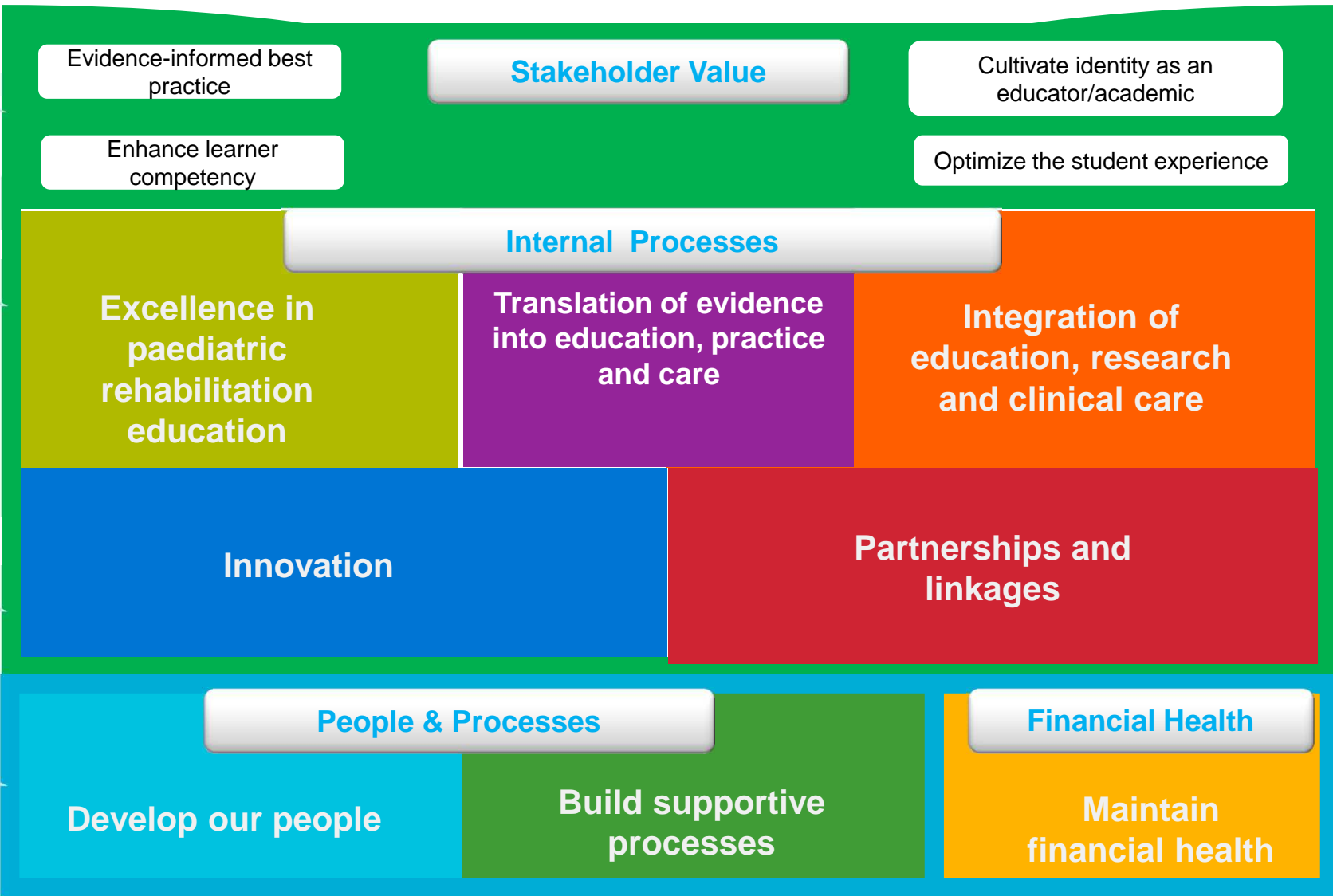
Bringing value to our staff, students and clients and families

To **accelerate knowledge** within an integrated system

To **lead the system** by focusing on innovation and strategic partnerships

We will **inspire our people** and efficiently utilize our resources

Aligned with our values



- Client and Family
- Excellence
- Caring
- Partnership
- Respect
- Innovation

A world of possibility through Teaching and Learning

To **transform care** for our clients and families through...

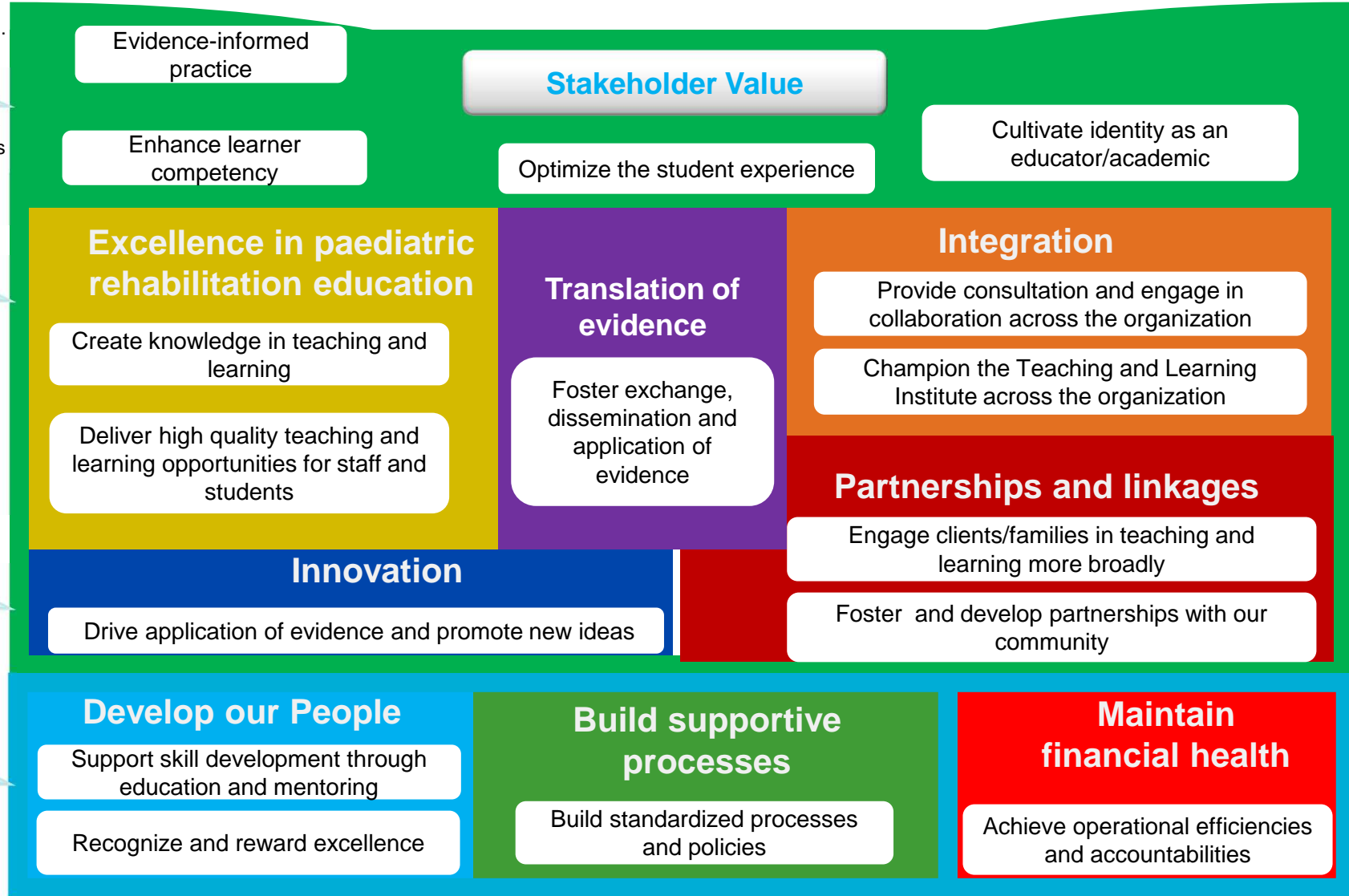
Bringing value to our staff, students and clients and families

To **accelerate knowledge** within an integrated system

To **lead the system** by focusing on innovation and strategic partnerships

We will **inspire our people** and efficiently utilize our resources

Aligned with our values



A world of possibility through Teaching and Learning

Stakeholder Value

Optimize the student experience

1. % rating the quality of their student experience

Cultivate identity as an educator/academic

4. % of clinical staff involved in an academic activity

Excellence in paediatric rehabilitation education

2. % of students who *agree* or *strongly agree* (and just *strongly agree*) that the feedback they received from their supervisor/preceptor was helpful.

3. % of students who *agree* or *strongly agree* (and just *strongly agree*) that they had opportunity to apply acquired theory/knowledge during their HB placement.

Translation of evidence

of clinical practice guidelines implemented

% compliance with recommendations identified in clinical practice guidelines

Integration

of Centres for Leadership/.Programs & Services with EtC joint projects

Innovation

5. # Simulation scenarios offered each fiscal year.

6. % of HB students involved in IPE quarterly/each fiscal year.

Partnerships and linkages

Develop our People

7. # faculty professional development opportunities offered by T&L each fiscal year.

Build supportive processes

8. % planned T&L milestones achieved (as per T&L action plan).

Maintain financial health

9. Variance to plan

Client and Family

Excellence

Caring

Partnership

Respect

Innovation

To **transform care** for our clients and families through...

Bringing value to our staff, students and clients and families

To **accelerate knowledge** within an integrated system

To **lead the system** by focusing on innovation and strategic partnerships

We will **inspire our people** and efficiently utilize our resources

Aligned with our values